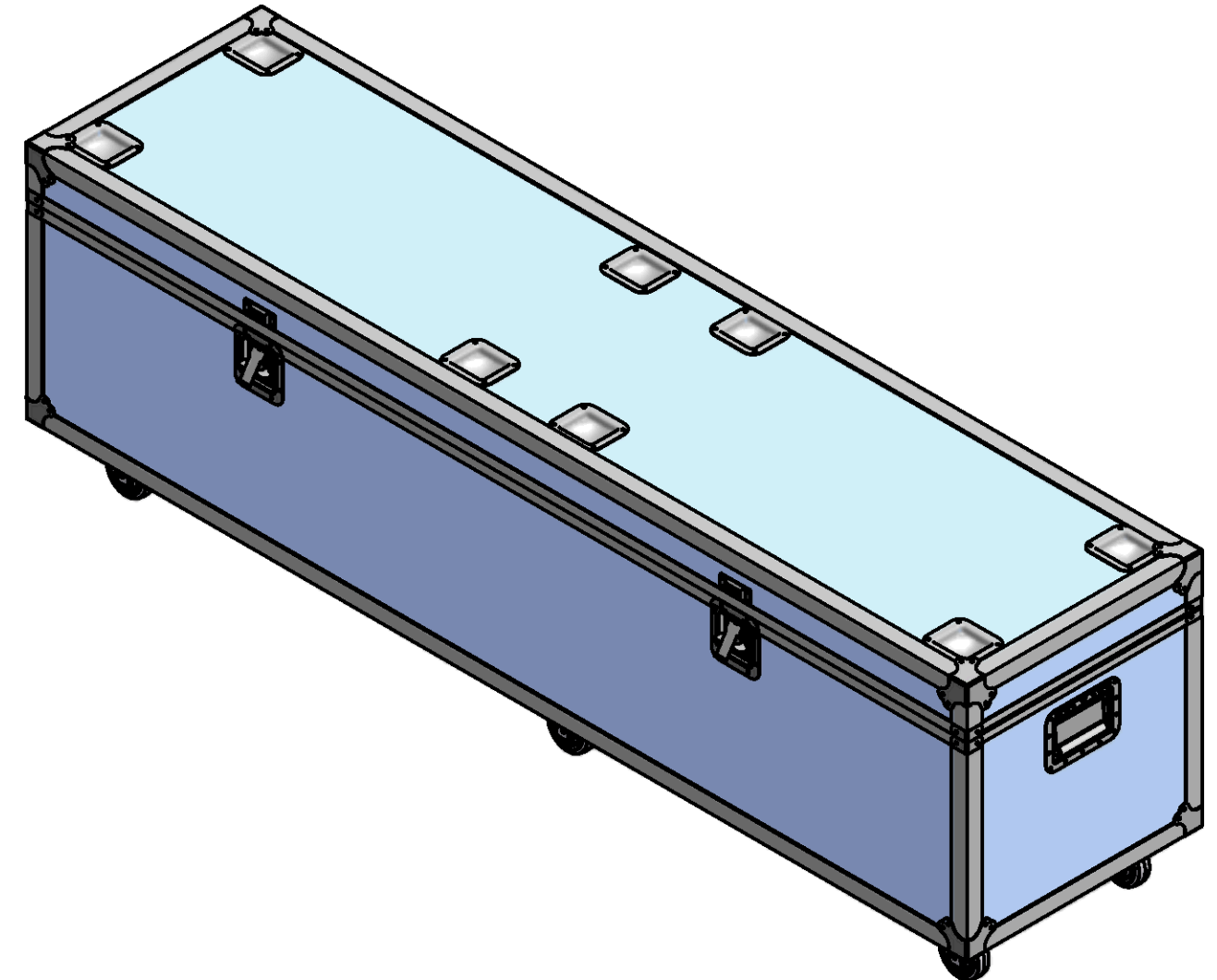
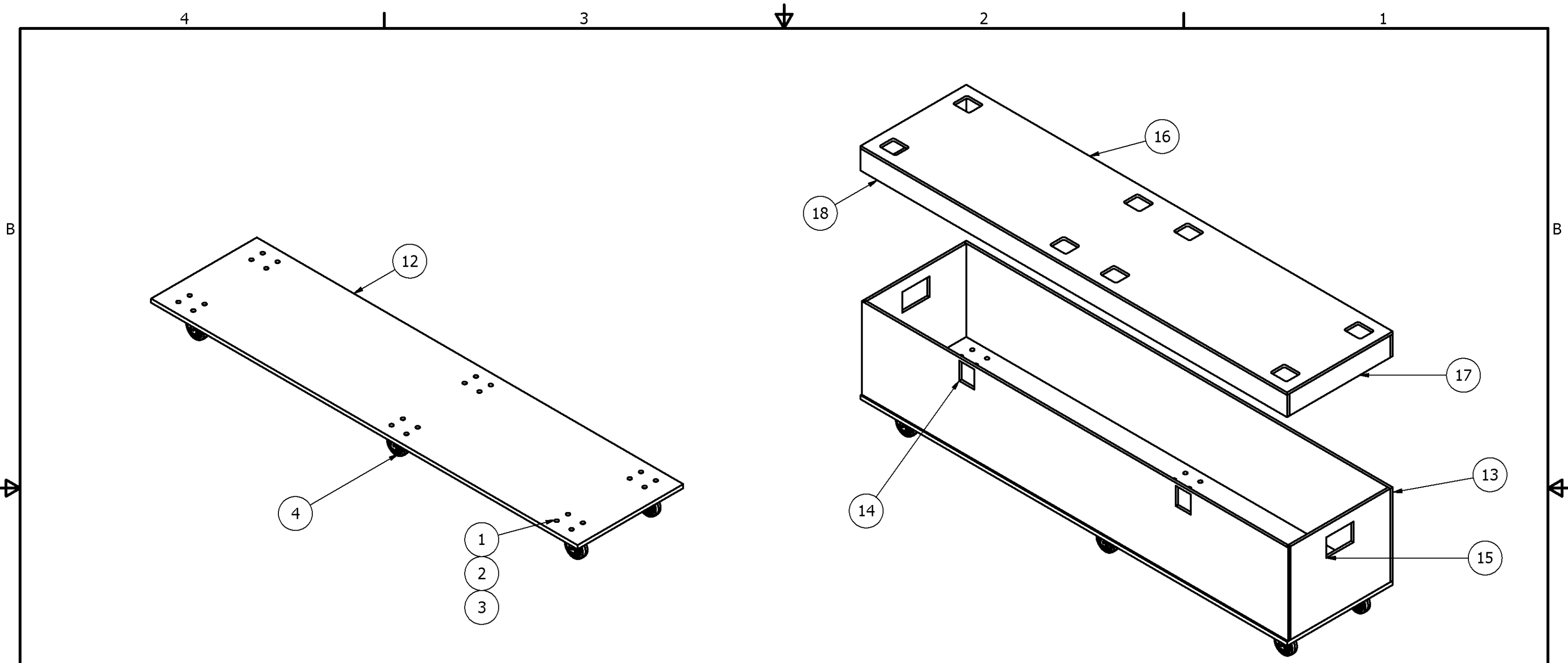


Resources		
Resource	Material	Quantity
1	1/2" Plywood 4' x 8'	2-1/2 sheets
2	6061 Aluminum Angle 1-1/2" x 1-1/2" x .125" thick	40 ft
3	1/2" Aluminum heavy duty groove extrusion	20 ft
4	1/2" Aluminum heavy duty tongue extrusion	20 ft
5	3/4" Plywood 4' x 8'	1 sheet

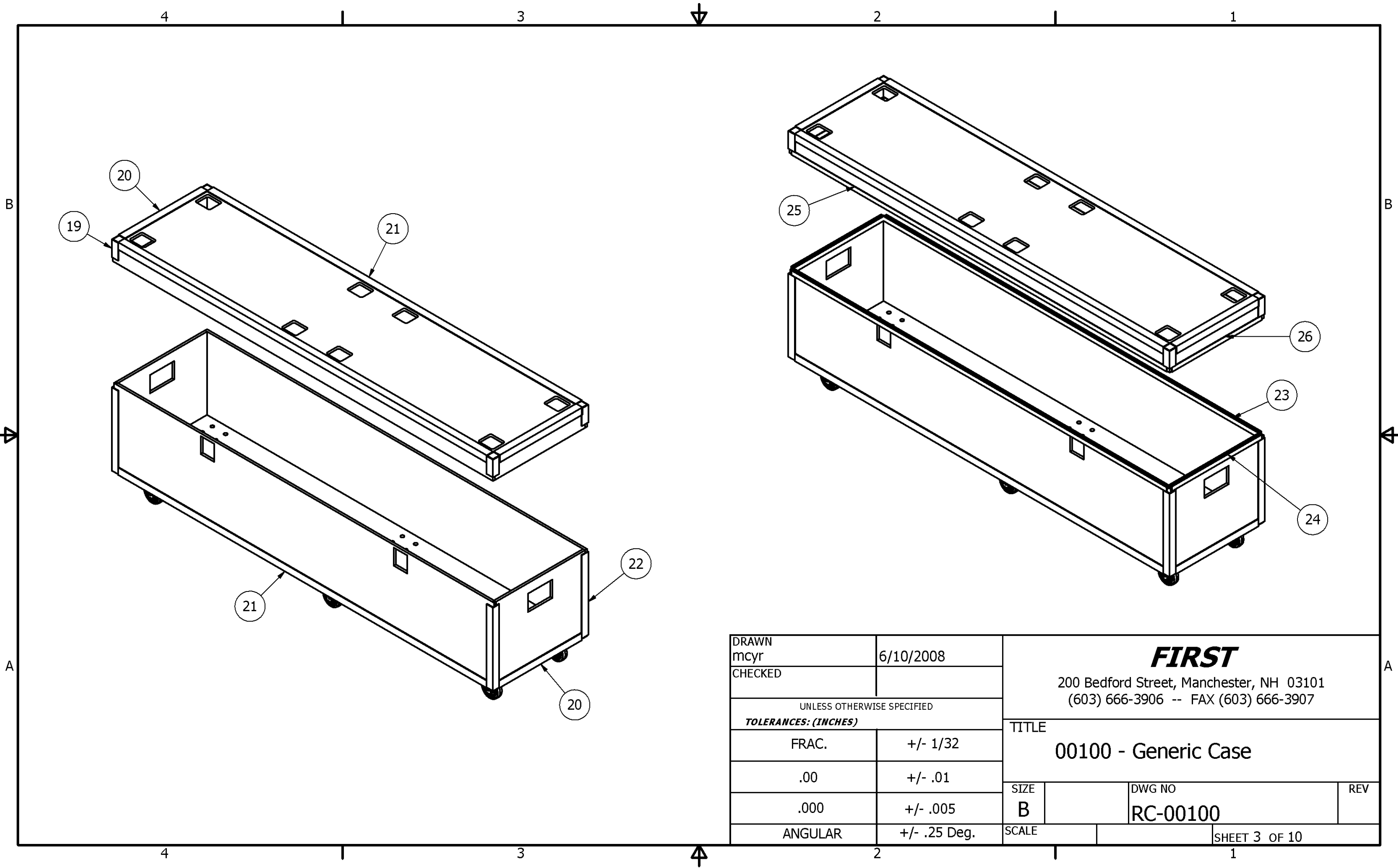
Parts List			
ITEM	QTY	PART NUMBER	DESCRIPTION
1	24	HW-00001	Carriage Bolt, 1/4-20 x 1.25
2	24	HW-00002	Nut, Lock 1/4-20
3	16	HW-00003	Washer, Flat 1/4"
4	6	PP-00001	Caster, Swivel 4"
5	2	PP-00002	Handle, Wide Grip
6	2	PP-00003	Catch, Retractable
7	2	PP-00004	Strike Plate
8	8	PP-00005	Corner, 16 GA
9	8	PP-00006	Strap, Corner
10	8	PP-00009	Cup, Caster
11	1	PP-00010-01	Hinge
12	1	RC-00100-01	22-1/4" x 89-3/4" x 1/2" Case Bottom
13	1	RC-00100-02	17" x 89-3/4" x 1/2" Case Back
14	1	RC-00100-03	17" x 89-3/4" x 1/2" Case Front
15	2	RC-00100-04	17" x 21-1/4" x 1/2" Case ends
16	1	RC-00100-05	22-1/4" x 89-3/4" x 1/2" Cover top
17	2	RC-00100-06	4" x 21-1/4" x 1/2" Cover ends
18	2	RC-00100-07	4" x 89-3/4" x 1/2" Cover front & back
19	4	RC-00100-08	1-1/2" x 1/8" thick x 3-5/8" Aluminum Angle Cover ends
20	4	RC-00100-09	1-1/2" x 1/8" thick x 17-1/2" Aluminum Angle Ends, cover/top, case/bottom
21	4	RC-00100-10	1-1/2" x 1/8" thick x 87" Aluminum Angle front & back, top & bottom
22	4	RC-00100-11	1-1/2" x 1/8" thick x 17" Aluminum Angle Case corners
23	2	RC-00100-12	88-1/2" Extrusion Groove Case front & back
24	2	RC-00100-13	21-1/4" Extrusion Groove case ends
25	2	RC-00100-14	88-1/2" Extrusion Tongue cover front & back
26	2	RC-00100-15	21-1/4" Extrusion Tongue cover ends



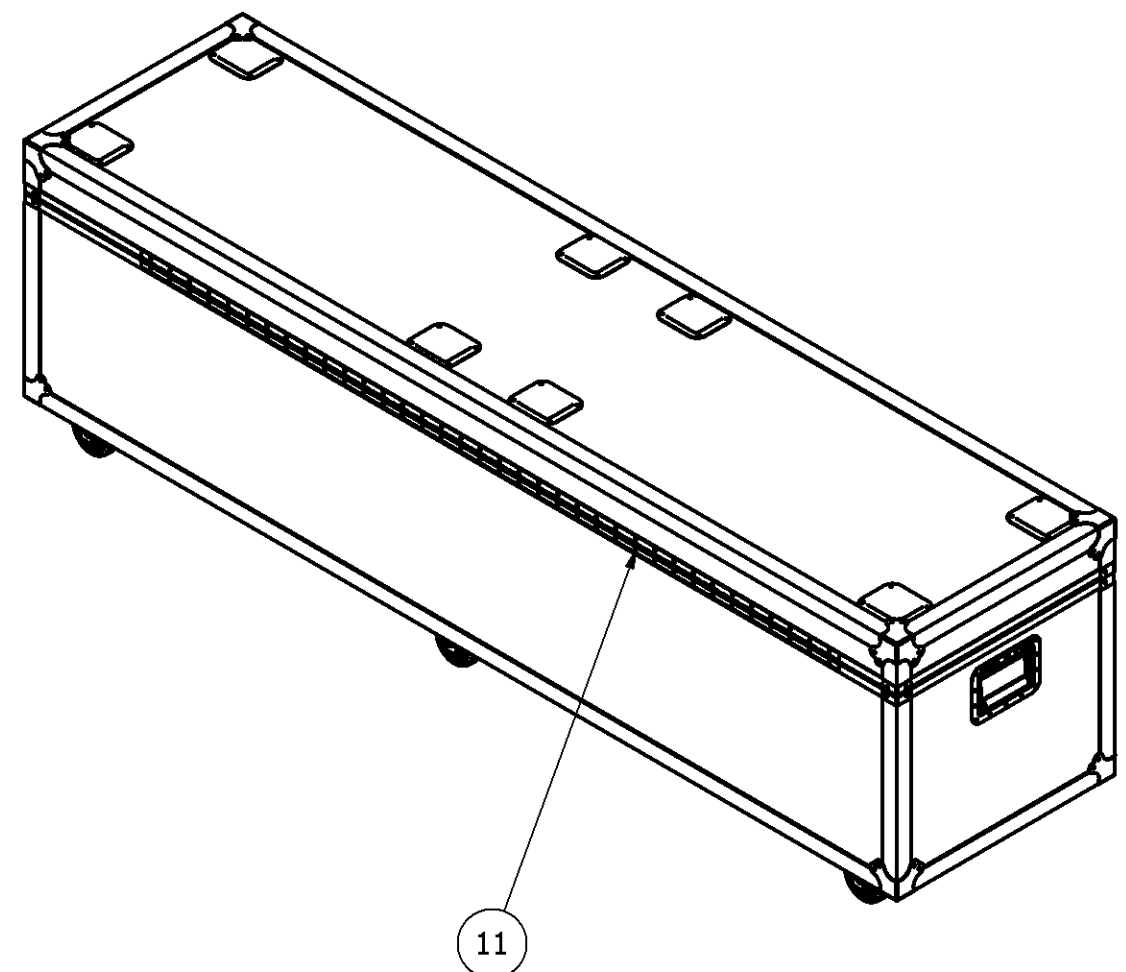
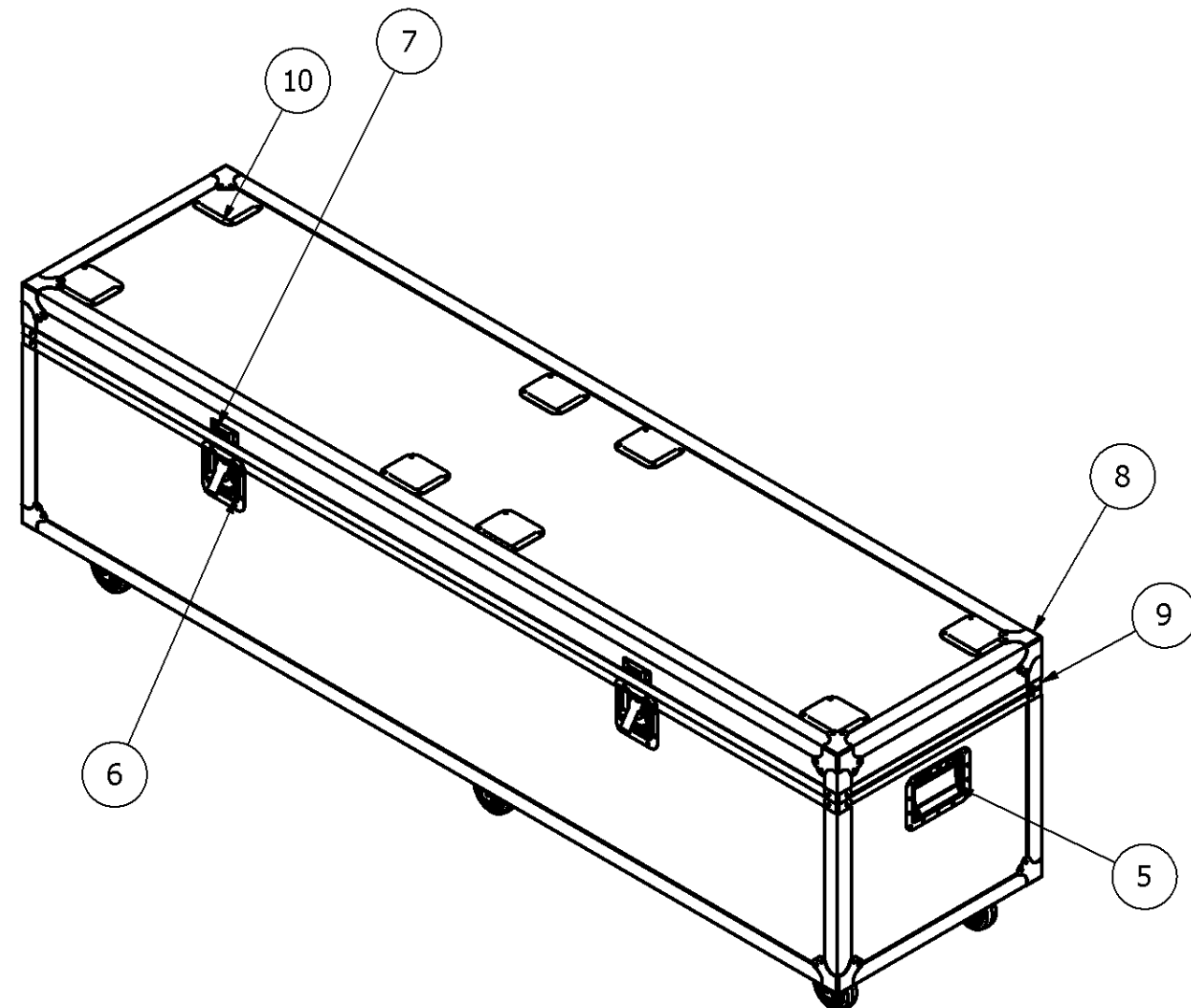
DRAWN mcyr	6/10/2008	<b>FIRST</b> 200 Bedford Street, Manchester, NH 03101 (603) 666-3906 -- FAX (603) 666-3907	
CHECKED			
UNLESS OTHERWISE SPECIFIED		TITLE	
<b>TOLERANCES: (INCHES)</b>		00100 - Generic Case	
FRAC.	+/- 1/32	SIZE	DWG NO
.00	+/- .01	<b>B</b>	RC-00100
.000	+/- .005	SCALE	REV
ANGULAR	+/- .25 Deg.		
			SHEET 1 OF 10



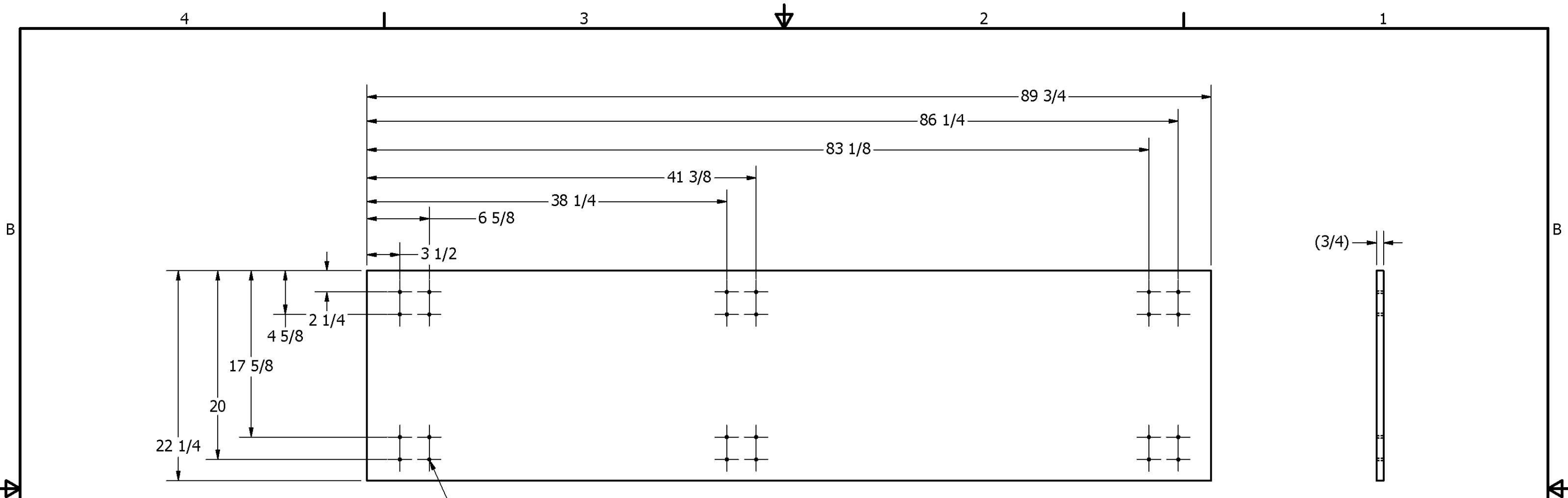
DRAWN mcyr	6/10/2008	<b>FIRST</b> 200 Bedford Street, Manchester, NH 03101 (603) 666-3906 -- FAX (603) 666-3907		
CHECKED				
UNLESS OTHERWISE SPECIFIED <b>TOLERANCES: (INCHES)</b>		TITLE <b>00100 - Generic Case</b>		
FRAC.	+/- 1/32			
.00	+/- .01	SIZE	DWG NO	REV
.000	+/- .005	<b>B</b>	<b>RC-00100</b>	
ANGULAR	+/- .25 Deg.	SCALE	SHEET 2 OF 10	



DRAWN mcyr	6/10/2008	<b>FIRST</b> 200 Bedford Street, Manchester, NH 03101 (603) 666-3906 -- FAX (603) 666-3907		
CHECKED				
UNLESS OTHERWISE SPECIFIED		TITLE <b>00100 - Generic Case</b>		
<b>TOLERANCES: (INCHES)</b>				
FRAC.	+/- 1/32			
.00	+/- .01			
.000	+/- .005	SIZE <b>B</b>	DWG NO <b>RC-00100</b>	REV
ANGULAR	+/- .25 Deg.	SCALE	SHEET 3 OF 10	

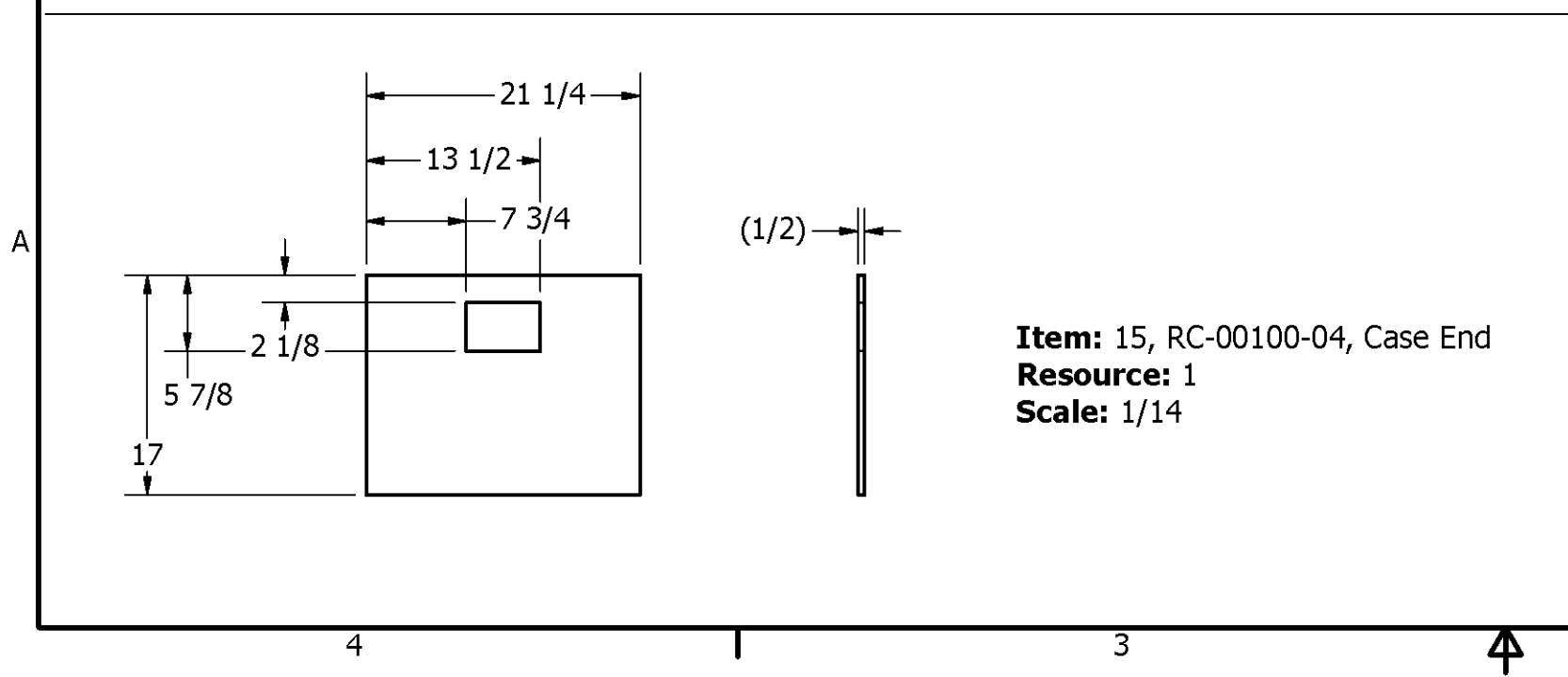


DRAWN mcyr	6/10/2008	<b>FIRST</b> 200 Bedford Street, Manchester, NH 03101 (603) 666-3906 -- FAX (603) 666-3907		
CHECKED				
UNLESS OTHERWISE SPECIFIED <b>TOLERANCES: (INCHES)</b>		TITLE <b>00100 - Generic Case</b>		
FRAC.	+/- 1/32			
.00	+/- .01			
.000	+/- .005			
ANGULAR	+/- .25 Deg.	SIZE <b>B</b>	DWG NO <b>RC-00100</b>	REV
		SCALE	SHEET 4 OF 10	



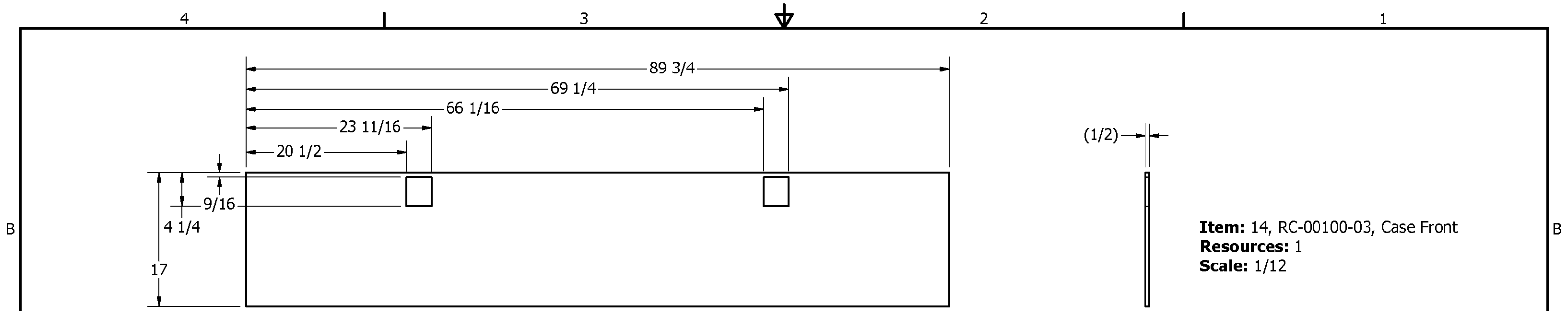
24x Ø1/4 THRU

**Item:** 12, RC-00100-01, Case Bottom  
**Resource:** 5  
**Scale:** 1/10

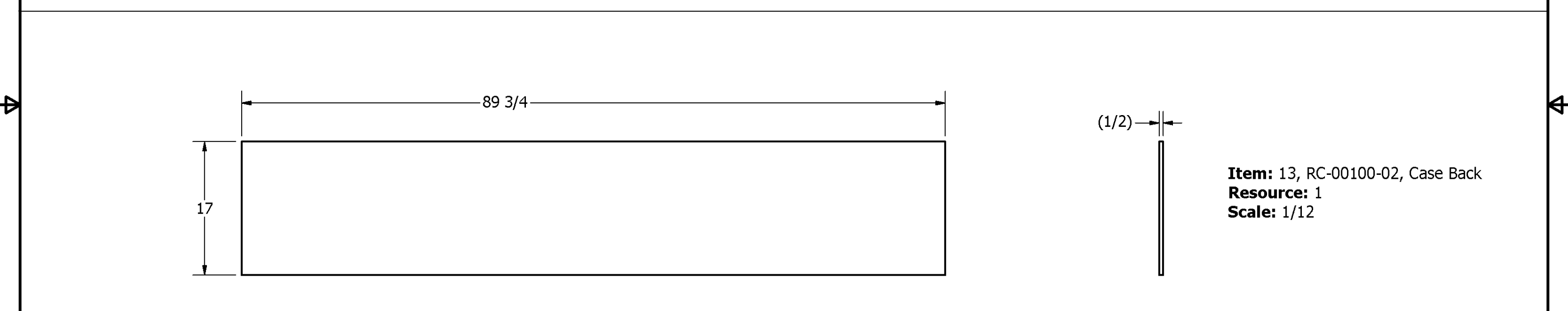


**Item:** 15, RC-00100-04, Case End  
**Resource:** 1  
**Scale:** 1/14

DRAWN	mcyr	6/10/2008	<b>FIRST</b> 200 Bedford Street, Manchester, NH 03101 (603) 666-3906 -- FAX (603) 666-3907	
CHECKED				
UNLESS OTHERWISE SPECIFIED			TITLE <b>00100 - Generic Case</b>	
<b>TOLERANCES: (INCHES)</b>				
FRAC.		+/- 1/32		
	.00		+/- .01	
	.000		+/- .005	
ANGULAR		+/- .25 Deg.		
SIZE	<b>B</b>	DWG NO	RC-00100	REV
SCALE				SHEET 5 OF 10

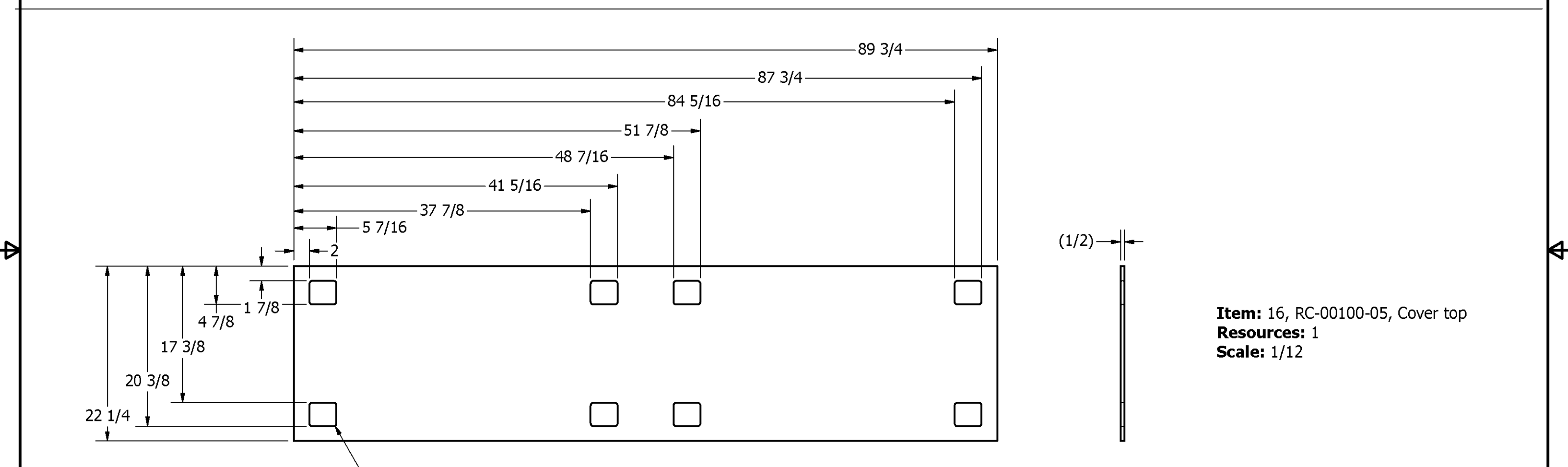
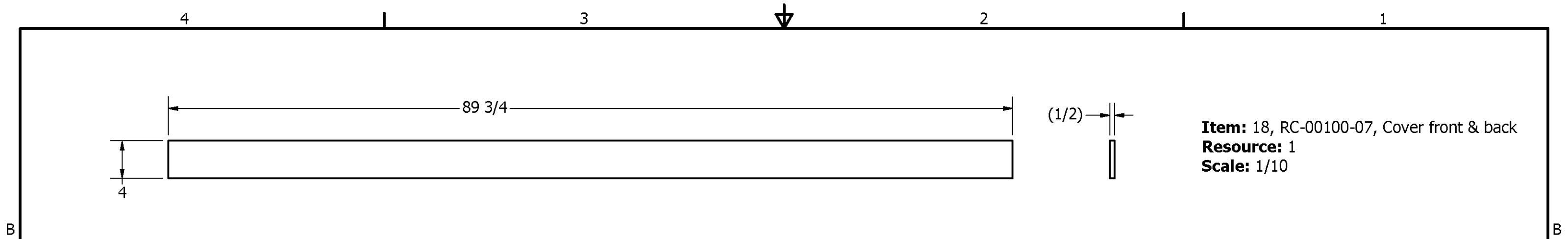


**Item:** 14, RC-00100-03, Case Front  
**Resources:** 1  
**Scale:** 1/12

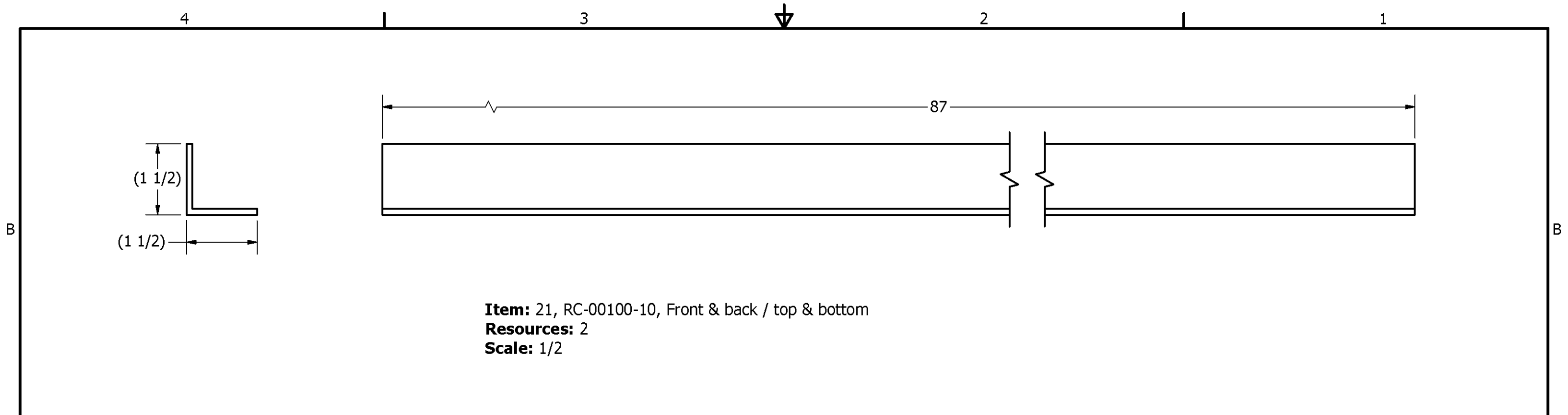


**Item:** 13, RC-00100-02, Case Back  
**Resource:** 1  
**Scale:** 1/12

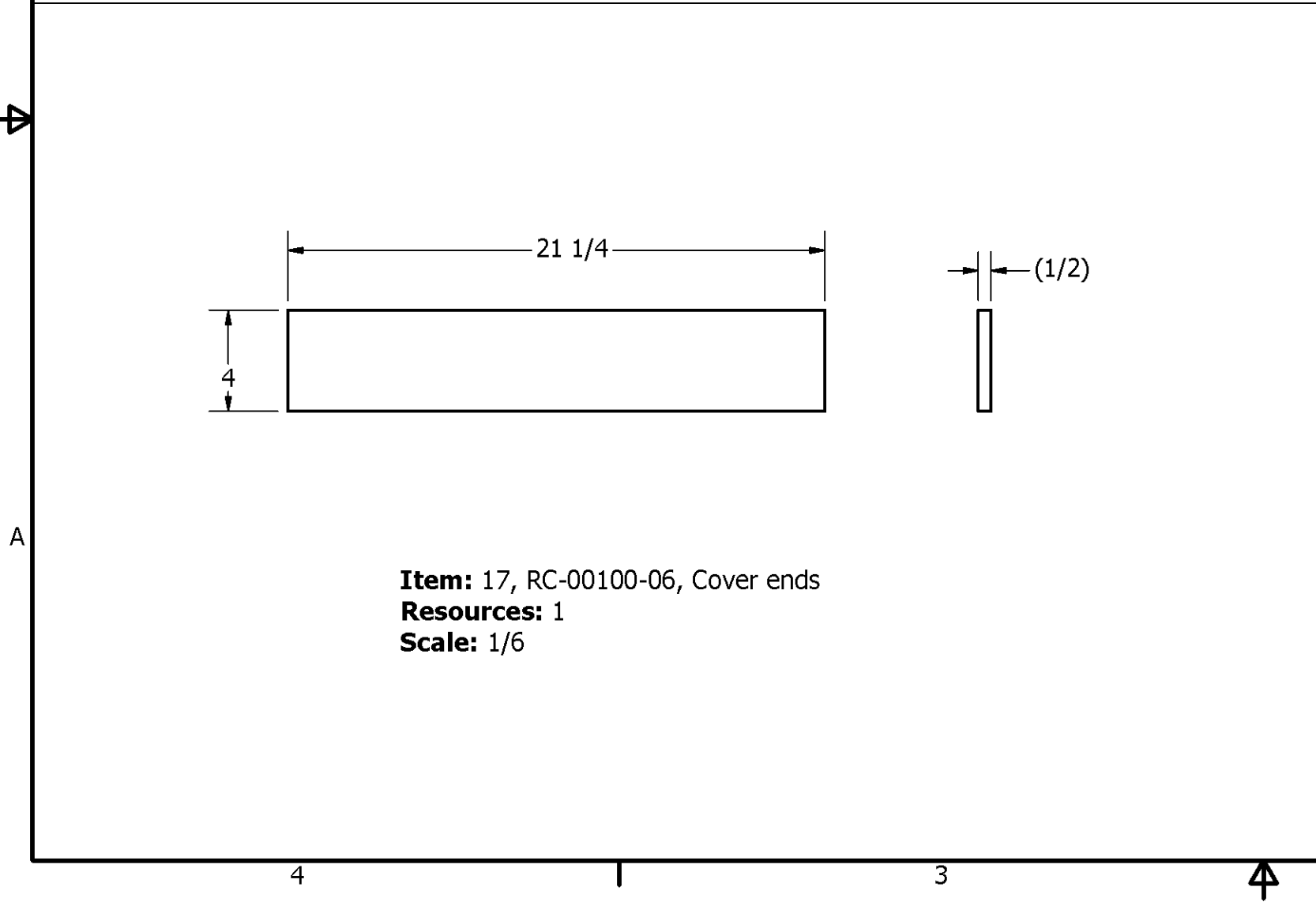
DRAWN mcyr	6/10/2008	<b>FIRST</b> 200 Bedford Street, Manchester, NH 03101 (603) 666-3906 -- FAX (603) 666-3907		
CHECKED				
UNLESS OTHERWISE SPECIFIED <b>TOLERANCES: (INCHES)</b>		TITLE <b>00100 - Generic Case</b>		
FRAC.	+/- 1/32			
.00	+/- .01			
.000	+/- .005	SIZE <b>B</b>	DWG NO <b>RC-00100</b>	REV
ANGULAR	+/- .25 Deg.	SCALE	SHEET 6 OF 10	



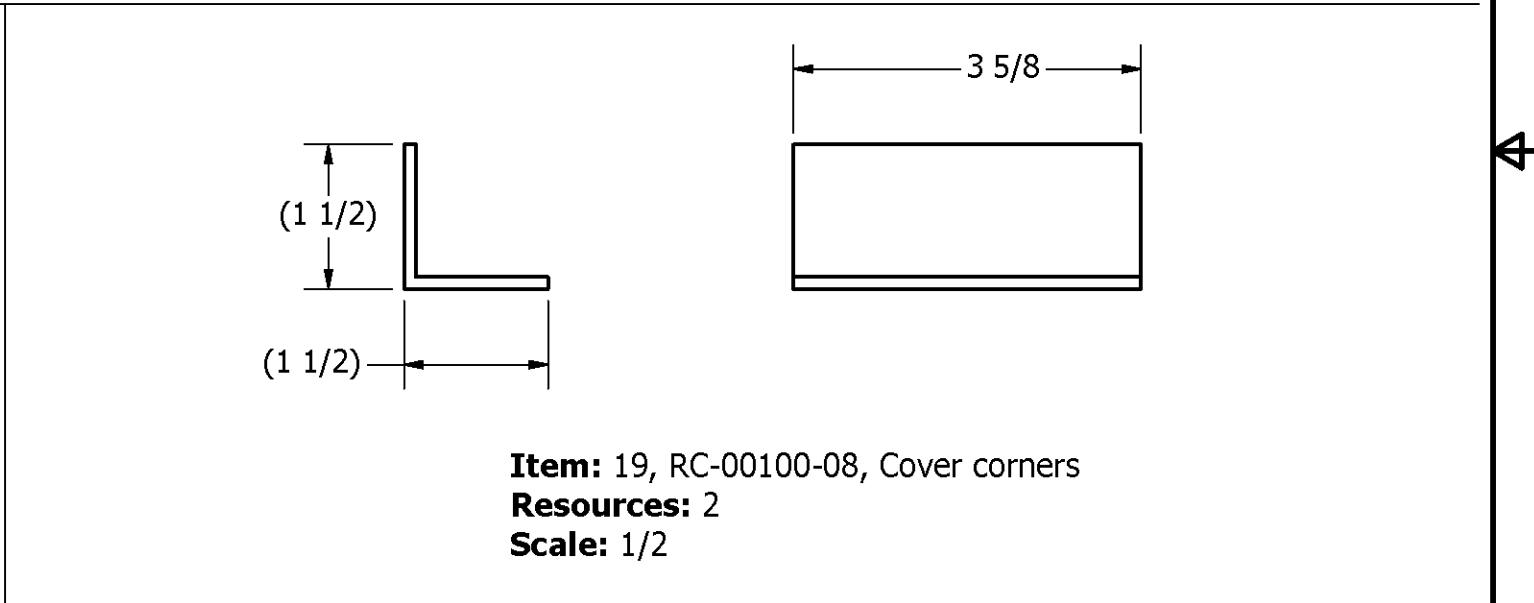
DRAWN	mcyr	6/10/2008	<b>FIRST</b> 200 Bedford Street, Manchester, NH 03101 (603) 666-3906 -- FAX (603) 666-3907	
CHECKED				
UNLESS OTHERWISE SPECIFIED			TITLE <b>00100 - Generic Case</b>	
<b>TOLERANCES: (INCHES)</b>				
FRAC.		+/- 1/32		
.00		+/- .01	SIZE	DWG NO
.000		+/- .005	<b>B</b>	<b>RC-00100</b>
ANGULAR		+/- .25 Deg.	SCALE	REV



**Item:** 21, RC-00100-10, Front & back / top & bottom  
**Resources:** 2  
**Scale:** 1/2



**Item:** 17, RC-00100-06, Cover ends  
**Resources:** 1  
**Scale:** 1/6



**Item:** 19, RC-00100-08, Cover corners  
**Resources:** 2  
**Scale:** 1/2

DRAWN	mcyr	6/10/2008	<b>FIRST</b> 200 Bedford Street, Manchester, NH 03101 (603) 666-3906 -- FAX (603) 666-3907	
CHECKED				
UNLESS OTHERWISE SPECIFIED			TITLE <b>00100 - Generic Case</b>	
<b>TOLERANCES: (INCHES)</b>				
FRAC.		+/- 1/32		
.00		+/- .01		
.000		+/- .005	SIZE	DWG NO
ANGULAR		+/- .25 Deg.	<b>B</b>	<b>RC-00100</b>
			SCALE	REV
				SHEET 8 OF 10

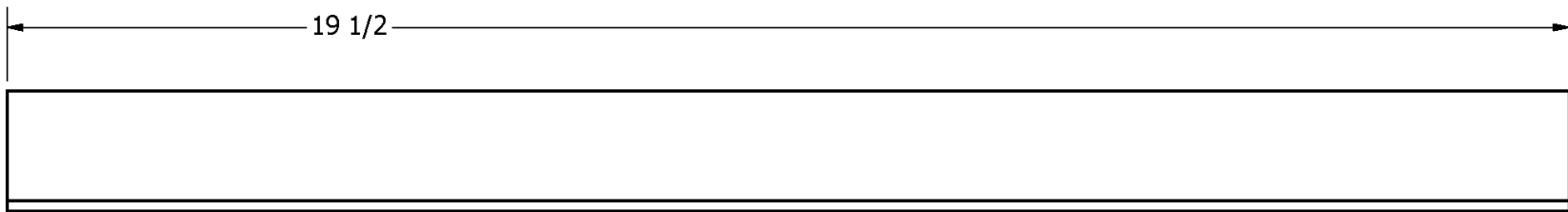
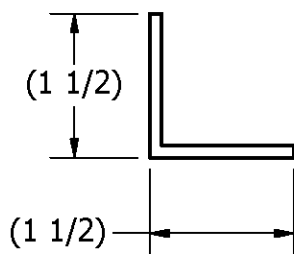


4

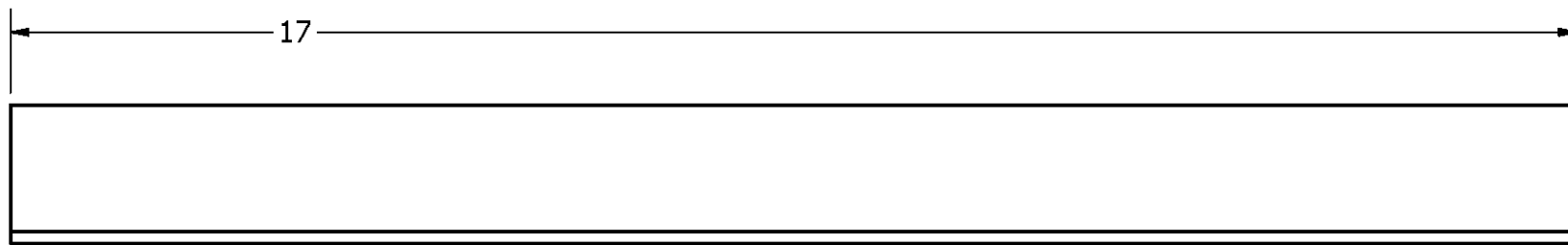
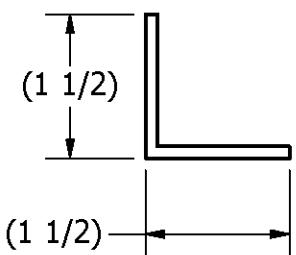
3

2

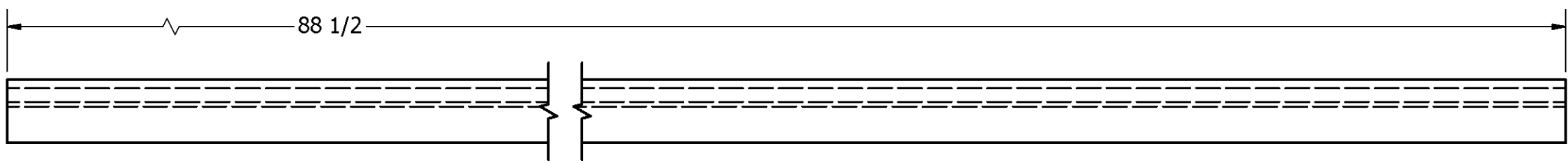
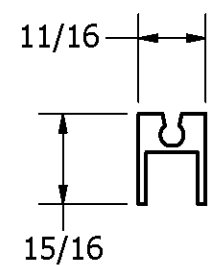
1



**Item:** 20, RC-00100-09, Ends Top/cover & bottom/case  
**Resource:** 2  
**Scale:** 1/2



**Item:** 22, RC-00100-11, Case corners  
**Resources:** 2  
**Scale:** 1/2



**Item:** 23, RC-0100-12, Case front & back  
**Resource:** 3  
**Scale:** 1/2

DRAWN	mcyr	6/10/2008
CHECKED		
UNLESS OTHERWISE SPECIFIED		
<b>TOLERANCES: (INCHES)</b>		
FRAC.		+/- 1/32
.00		+/- .01
.000		+/- .005
ANGULAR		+/- .25 Deg.

<b>FIRST</b>		
200 Bedford Street, Manchester, NH 03101 (603) 666-3906 -- FAX (603) 666-3907		
TITLE <b>00100 - Generic Case</b>		
SIZE		DWG NO
<b>B</b>		<b>RC-00100</b>
SCALE		REV
		SHEET 9 OF 10

4

3

2

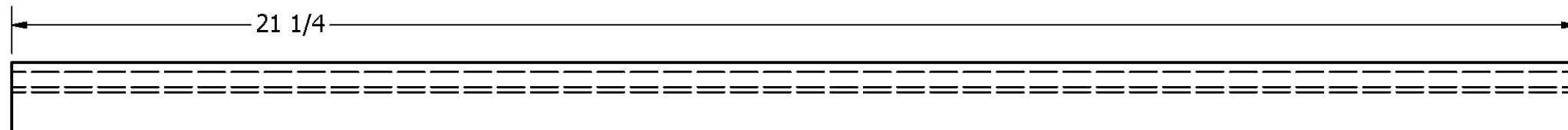
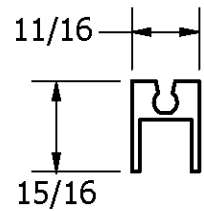
1

4

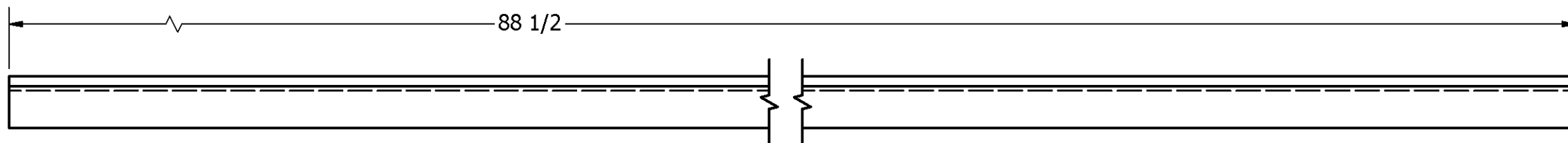
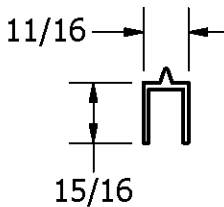
3

2

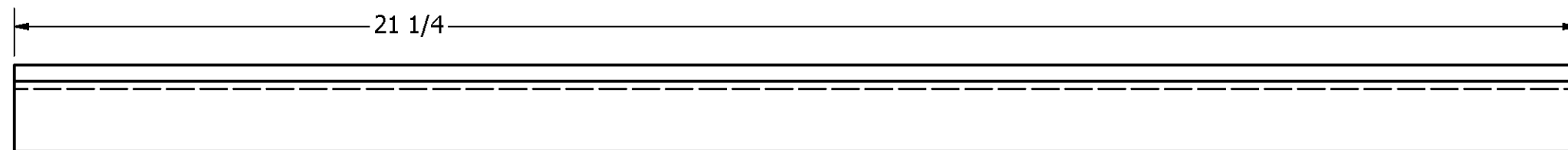
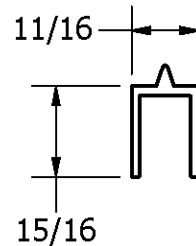
1



**Item:** 24, RC-00100-13, Case ends  
**Resource:** 3  
**Scale:** 1/2



**Item:** 25, RC-00100-14, Cover front & back  
**Resource:** 4  
**Scale:** 1/3



**Item:** 26, RC-00100-15, Cover ends  
**Resource:** 4  
**Scale:** 1/2

DRAWN	mcyr	6/10/2008
CHECKED		
UNLESS OTHERWISE SPECIFIED		
<b>TOLERANCES: (INCHES)</b>		
FRAC.		+/- 1/32
.00		+/- .01
.000		+/- .005
ANGULAR		+/- .25 Deg.

<b>FIRST</b>		
200 Bedford Street, Manchester, NH 03101 (603) 666-3906 -- FAX (603) 666-3907		
TITLE <b>00100 - Generic Case</b>		
SIZE		DWG NO
<b>B</b>		<b>RC-00100</b>
SCALE		SHEET 10 OF 10

4

3

2

1

4