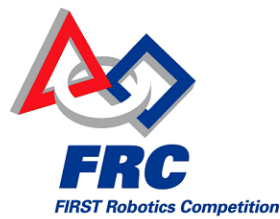
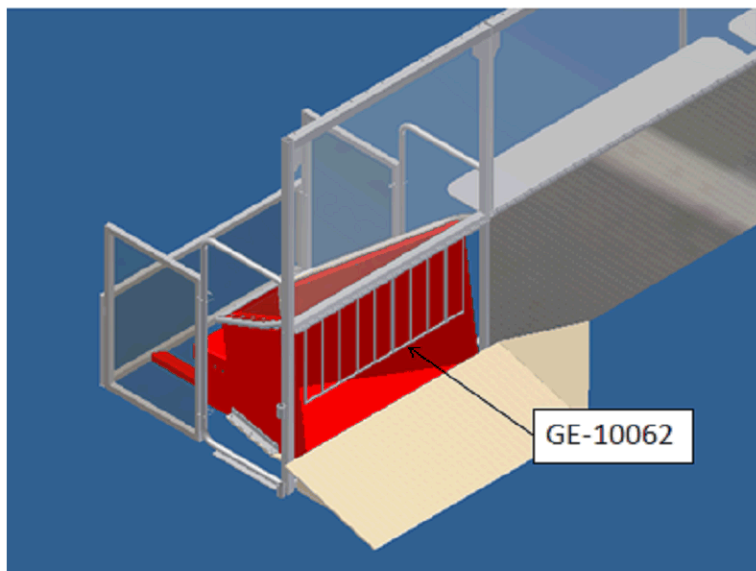


GE-10062: Chain Assembly Instructions



Materials and Tools (per corner)

- Chain: Qty 20 feet, Ace Hardware P/N: 5365283 or similar
- D-Links: Qty 20, Lowes P/N: 147912 or similar
- Cable Tie Holder: Qty 10, McMaster-Carr P/N: 7566K64 or similar
- Chain or bolt cutters
- Tape Measure
- Zip ties: Qty 10

Instructions

Step 1: Using cutters and tape measure, cut a 15.5" length of chain. Repeat for a total of 10 pieces.



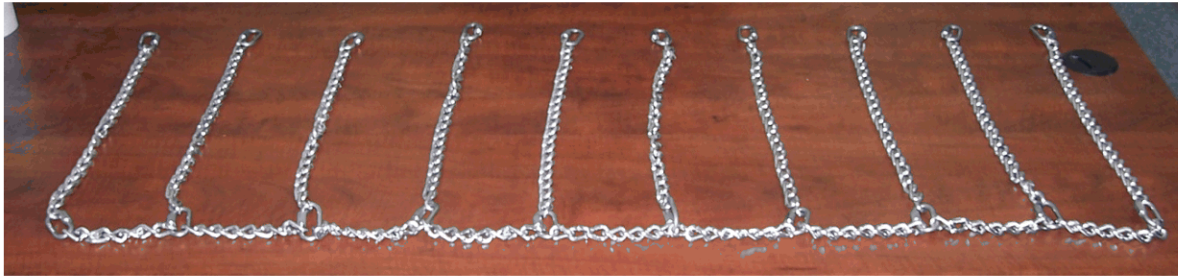
Step 2: Cut nine pieces of chain that are 5.25" long.



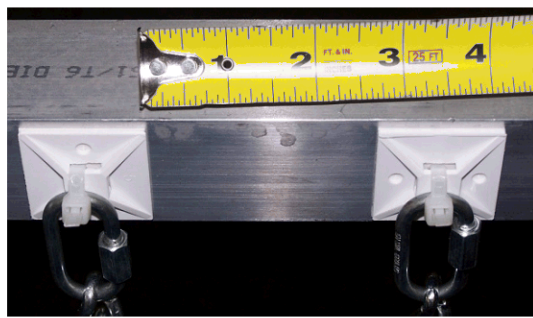
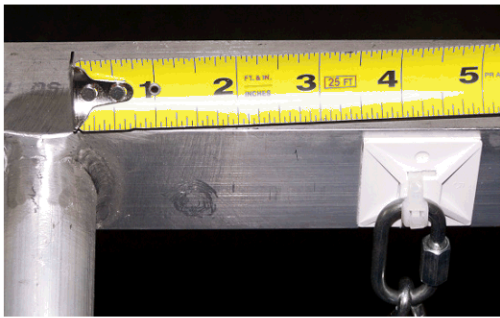
Step 3: Take all ten of the 15.5" lengths of chain. Attach D-Links to both ends of the chain as shown.



Step 4: Take the 5.25" chain lengths and connect the 15.5" lengths together as shown. The assembly is now complete.



Step 5: Apply the zip tie holders to the Goal Frame. Apply the first holder 3.75" from the tube as shown. Then attach holders approximately every 4" (~2.75" between the pads). Attach the D-Links that are on the loose ends of the chain to the holders as shown using zip ties.



Assembly is now installed into the goal! It should look similar to the picture below.

