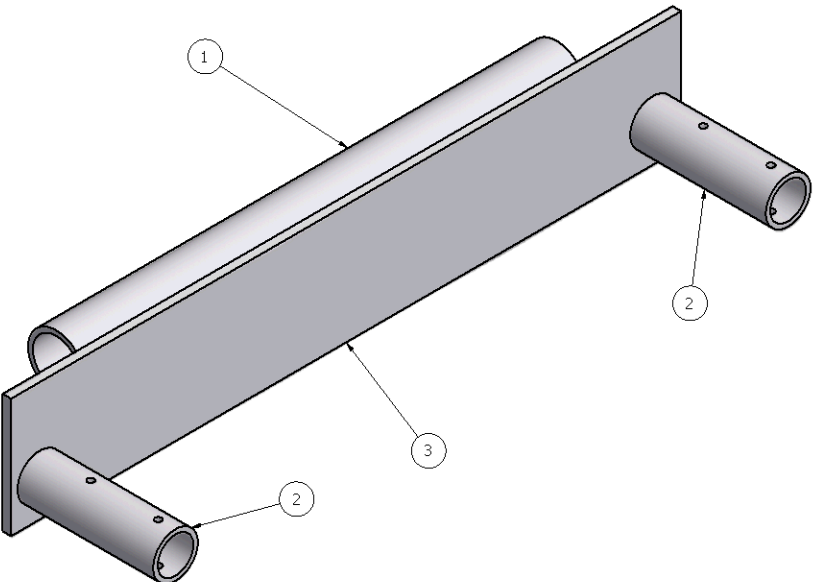


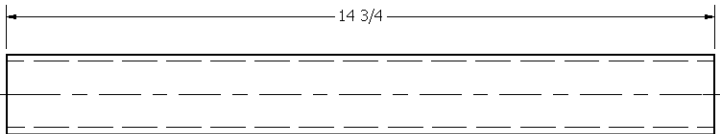
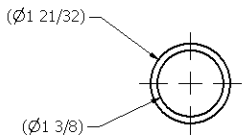
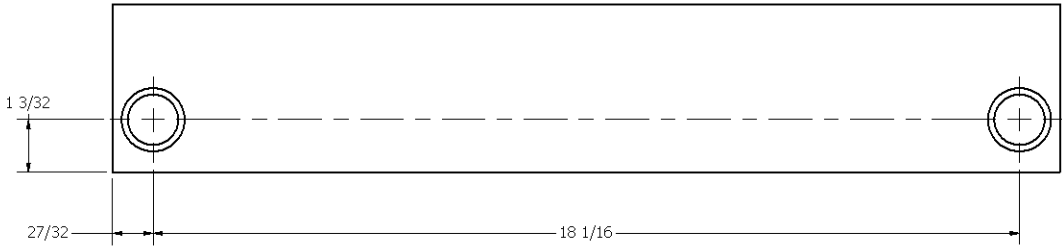
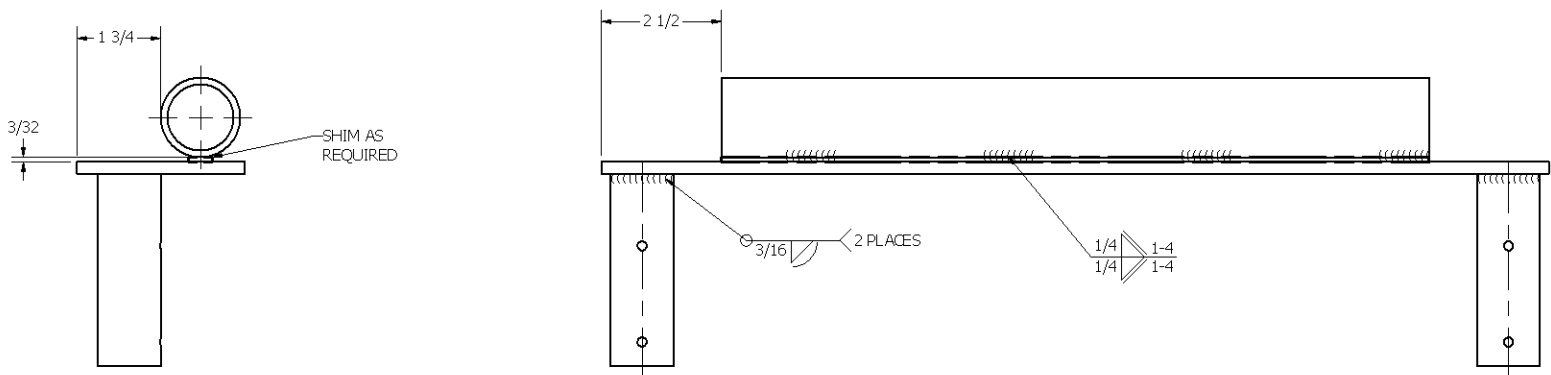
REVISION HISTORY				
ZONE	REV	DESCRIPTION	DATE	APPROVED
	1	redrawn	5/30/2008	narosenberg



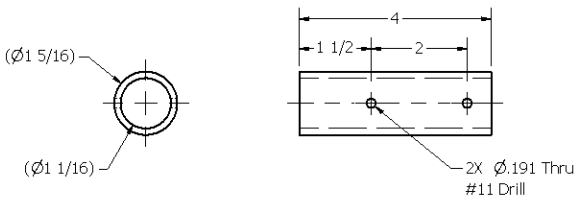
RESOURCES		
RESOURCE	QTY.	DESCRIPTION
1	15"	1 1/4" SCHEDULE 40 6061-T6 ALUMINUM PIPE
2	8"	1" SCHEDULE 40 6061-T6 ALUMINUM PIPE
3	20"	3 1/2" X 1/4" 6061-T6 ALUMINUM BAR

Parts List			
ITEM	QTY	PART NUMBER	DESCRIPTION
1	1	FE-00018-01	Connecting Tube
2	2	FE-00018-02	Insert Tube
3	1	FE-00018-03	Mounting Plate

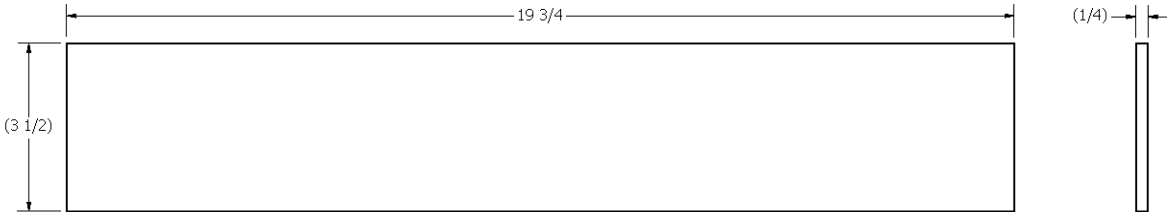
DRAWN dfoster		5/30/2008	FIRST 200 Bedford Street, Manchester, NH 03101 (603) 666-3906 -- FAX (603) 666-3907	
CHECKED narosenberg		8/4/2008		
UNLESS OTHERWISE SPECIFIED			TITLE	
TOLERANCES: (INCHES)			CORNER CONNECTOR	
FRAC.	+/- 1/32		SIZE	DWG NO
.00	+/- .01		D	FE-00018
.000	+/- .005		SCALE	REV
ANGULAR	+/- .25 Deg.			1



ITEM: 1, FE-00018-01 CONNECTING TUBE
RESOURCE: 1
SCALE: 1/2



ITEM: 2, FE-00018-02 INSERT TUBE
RESOURCE: 2
SCALE: 1/2



ITEM: 3, FE-00018-03 MOUNTING PLATE
RESOURCE: 3
SCALE: 1/2