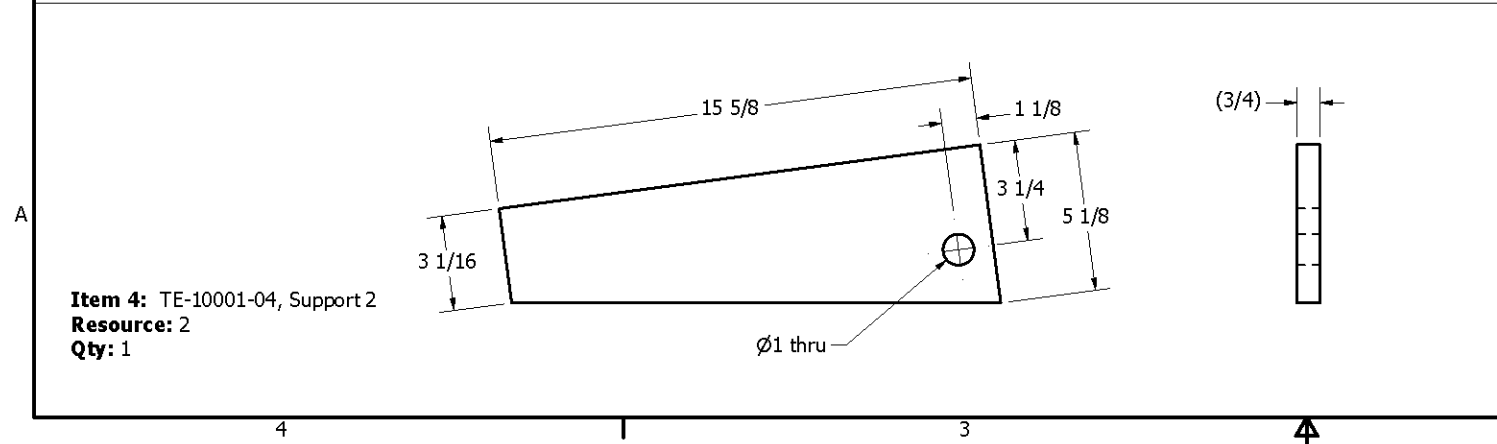
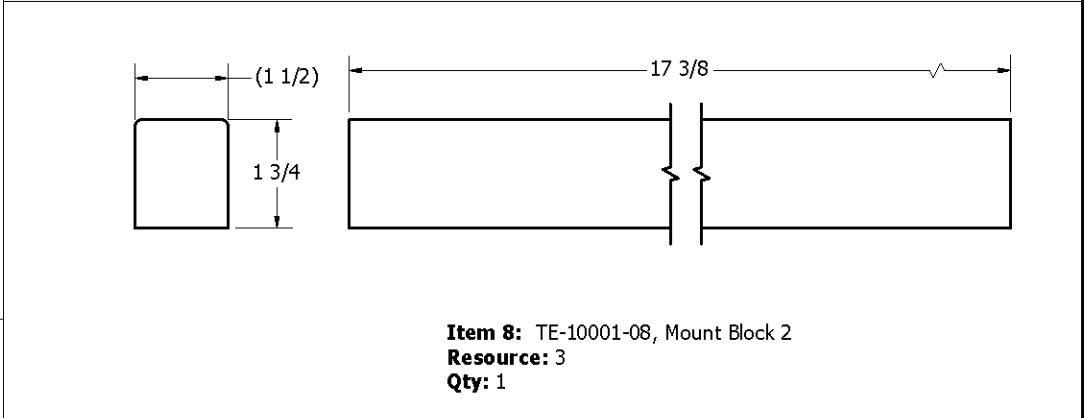
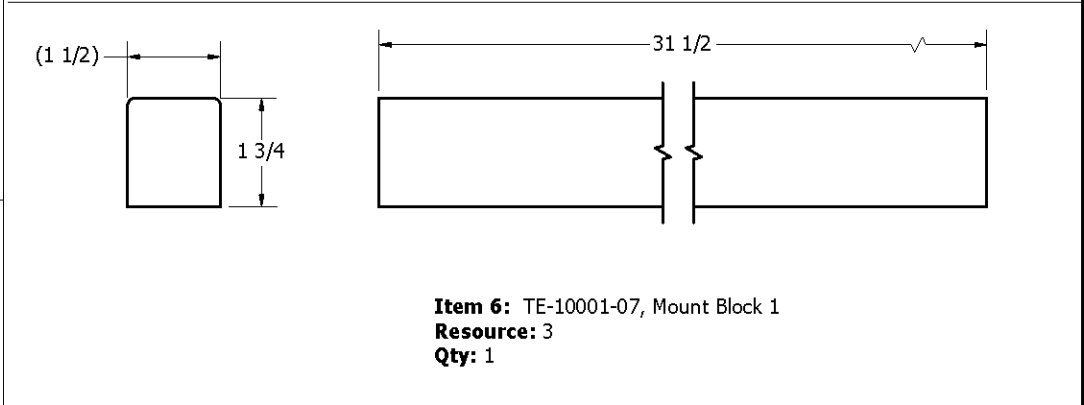
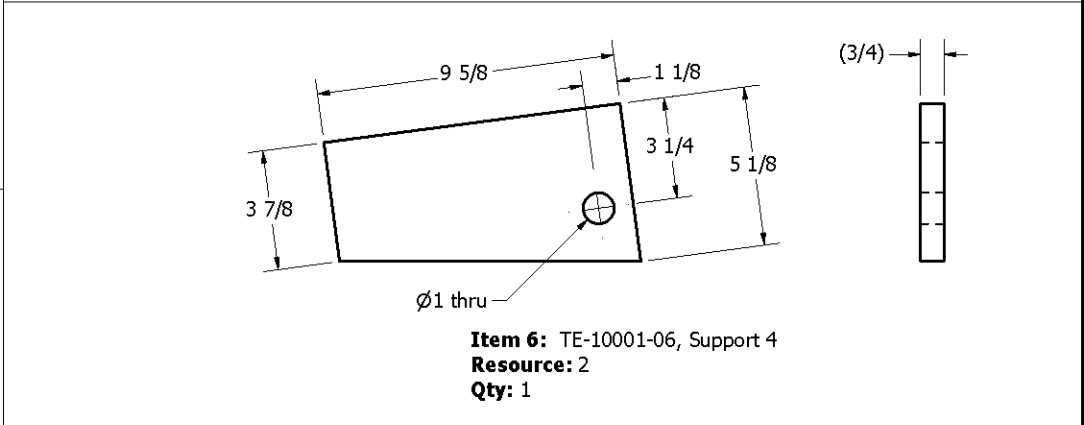
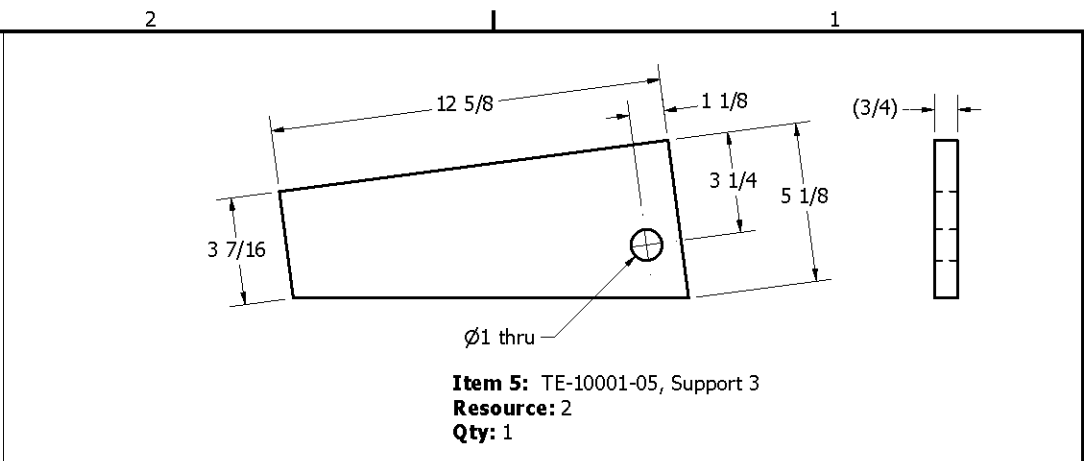
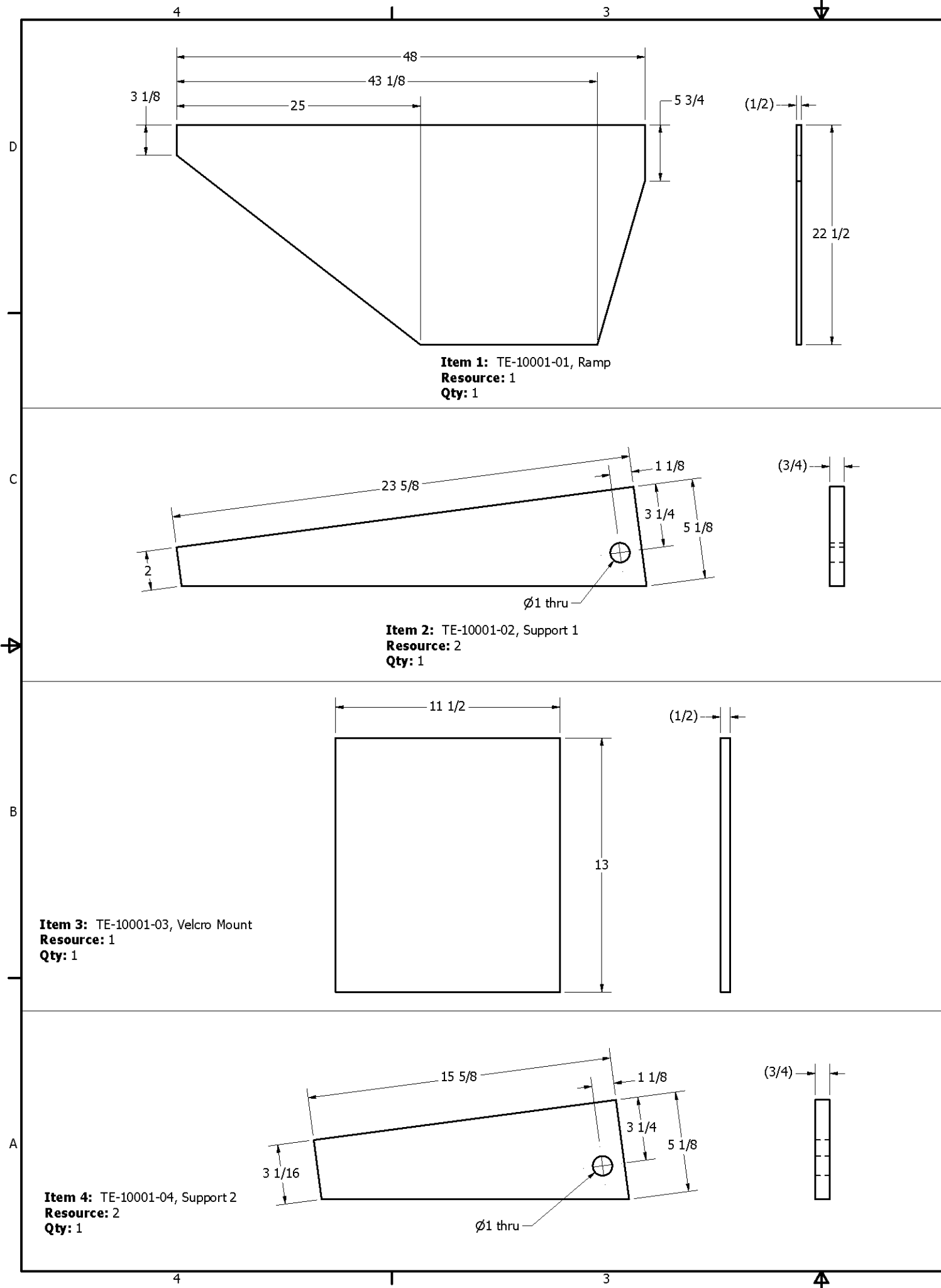


- Notes:
- 1) All components should be glued and stapled at assembly.
 - 2) Staple can be substituted with wood screws, but holes should be pre-drilled into the wood to avoid splitting.
 - 3) All assemblies shown are left side version, unless otherwise noted.

Resources		
Resource	Description	Quantity
1	1/2" Plywood	< 1/2 sheet
2	3/4" Plywood	< 1/4 sheet
3	2x4 Lumber (Pine)	32"
4	2" Wide Hook Velcro w/Adhesive Backing	13"

PARTS LIST			
ITEM	QTY	PART NUMBER	DESCRIPTION
1	1	TE-10001-01	Ramp
2	1	TE-10001-02	Support 1
3	1	TE-10001-03	Velcro Mount
4	1	TE-10001-04	Support 2
5	1	TE-10001-05	Support 3
6	1	TE-10001-06	Support 4
7	1	TE-10001-07	Mount Block 1
8	1	TE-10001-08	Mount Block 2
9	1	TE-10001-09	2" Hook Velcro, Adhesive Backed, 13" long

DRAWN dfoster		11/16/2009		<div>FIRST</div> <div>200 Bedford Street, Manchester, NH 03101 (603) 666-3906 -- FAX (603) 666-3907</div>			
CHECKED mcyr		12/11/2009					
UNLESS OTHERWISE SPECIFIED <i>TOLERANCES: (INCHES)</i>							
FRAC.		+/- 1/32		TITLE Rear Ramp			
.00		+/- .01					
.000		+/- .005					
ANGULAR		+/- .25 Deg.		SIZE		DWG NO	REV
				C		TE-10001	
				SCALE		SHEET 1 OF 2	



DRAWN dfoster	11/16/2009	<div>FIRST</div> <div>200 Bedford Street, Manchester, NH 03101 (603) 666-3906 -- FAX (603) 666-3907</div>			
CHECKED mcy	12/11/2009				
UNLESS OTHERWISE SPECIFIED <i>TOLERANCES: (INCHES)</i>					
FRAC.	+/- 1/32	TITLE Rear Ramp			
.00	+/- .01				
.000	+/- .005				
ANGULAR	+/- .25 Deg.	SIZE C	DWG NO TE-10001	REV	
		SCALE	SHEET 2 OF 2		

2

1