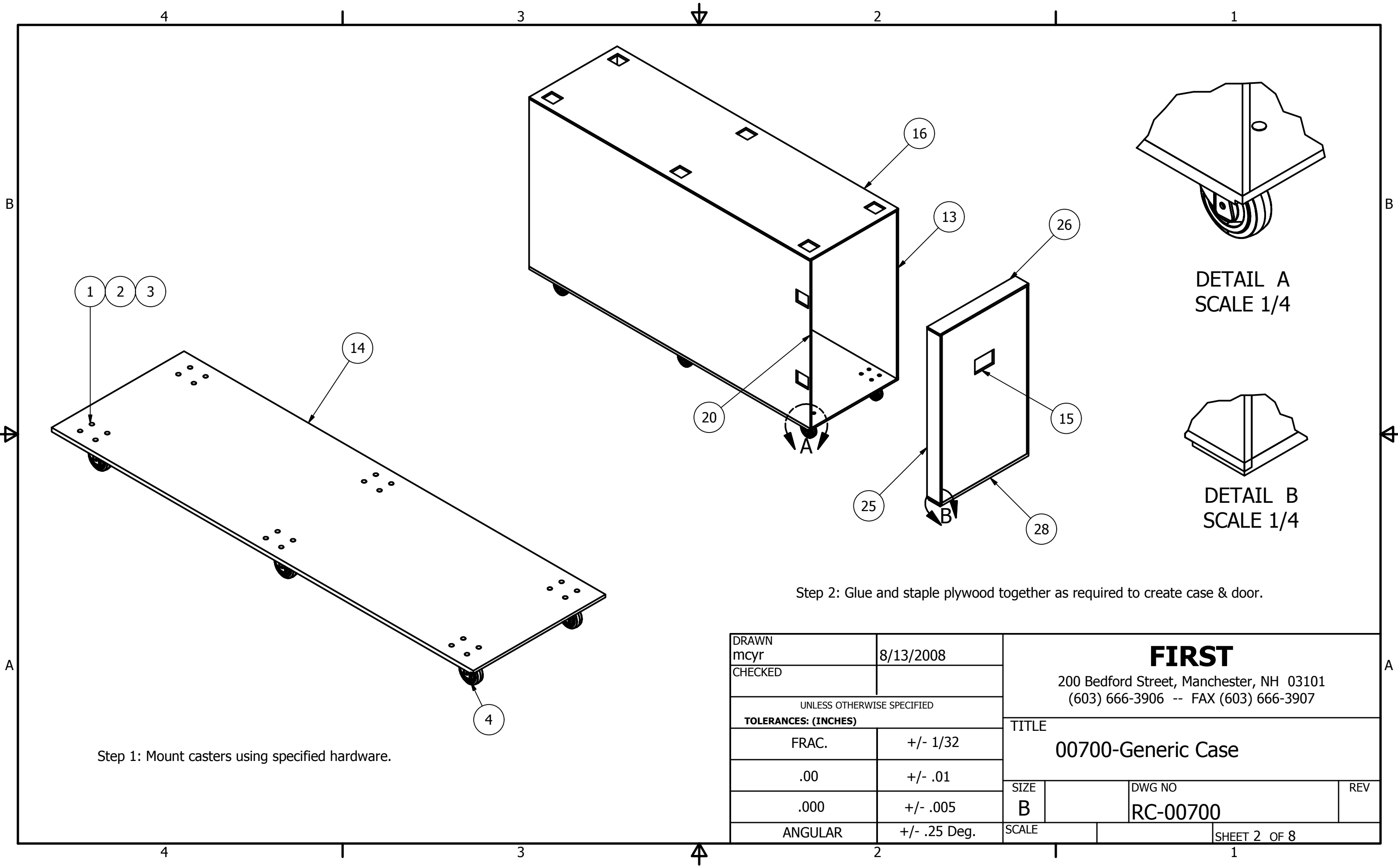


Parts List			
ITEM	QTY	PART NUMBER	DESCRIPTION
1	24	HW-00001	Carriage bolt, 1/4-20 x 1-1/4"
2	24	HW-00002	Lock Nut 1/4-20
3	24	HW-00003	Flat washer 1/4"
4	6	PP-00001	Caster, Swivel 4"
5	2	PP-00002	Handle, Wide Grip
6	2	PP-00003	Catch, Retractable
7	2	PP-00004	Strike Plate
8	8	PP-00005	Corner, 16 GA
9	8	PP-00006	Strap, Corner
10	6	PP-00009	Cup, Caster
11	1	PP-00010-02	36" Hinge
12	2	PP-00011	Card Holder
13	1	RC-00700-01	44-1/2" x 85-1/4" x 1/2" Plywood case back
14	1	RC-00700-02	26-3/4" x 85-1/4" x 3/4" Plywood case bottom
15	2	RC-00700-03	25-3/4" x 44-1/2" x 1/2" Plywood case side
16	1	RC-00700-04	26-3/4" x 85-1/4" x 1/2" Plywood case top
17	4	RC-00700-07	1-1/2" x 1-1/2" x 84-11/16" Aluminum angle top/ bottop front/back
18	4	RC-00700-08	1-1/2" x 1-1/2" x 43" Aluminum Angle sides front/back
19	4	RC-00700-09	1-1/2" x 1-1/2" x 24" Aluminum Angle
20	1	RC-00700-12	44-1/2" x 85-1/4" x 1/2" Plywood case front
21	2	RC-00700-13	44-1/2" Extrusion, Groove case sides front/back
22	2	RC-00700-14	25-1/2" Extrusion, Groove case sides top/bottom
23	2	RC-00700-15	44-1/2" Extrusion, Tongue door front/back
24	2	RC-00700-16	25-1/2" Extrusion, Tongue door top/bottom
25	2	RC-00700-17	4" x 44-1/2" x 1/2" Plywood Door front / back
26	1	RC-00700-18	4" x 26-3/4" x 1/2" Plywood door top
27	4	RC-00700-19	1-1/2" x 1-1/2" x 3-1/8" Aluminum Angle door front/back top/bottom
28	1	RC-00700-20	4" x 26-3/4" x 3/4" Plywood Door bottom

Resources		
Resourc	Material	Quantity
1	4' x 8' x 3/4" Plywood	1 sheet
2	4' x 8' x 1/2" Plywood	3 sheets
3	1-1/2" x 1/8" thick 6061 Aluminum Angle	50 feet
4	1/2" Heavy duty Extruded Groove	12 feet
5	1/2" Heavy Duty Extruded Tongue	12 feet
6	16GA galvanized, chisel point staples, 7/16" crown, 1-1/8" long	AR
7	Wood glue	AR
8	3*16" Dia.Aluminum buttonhead rivets	AR

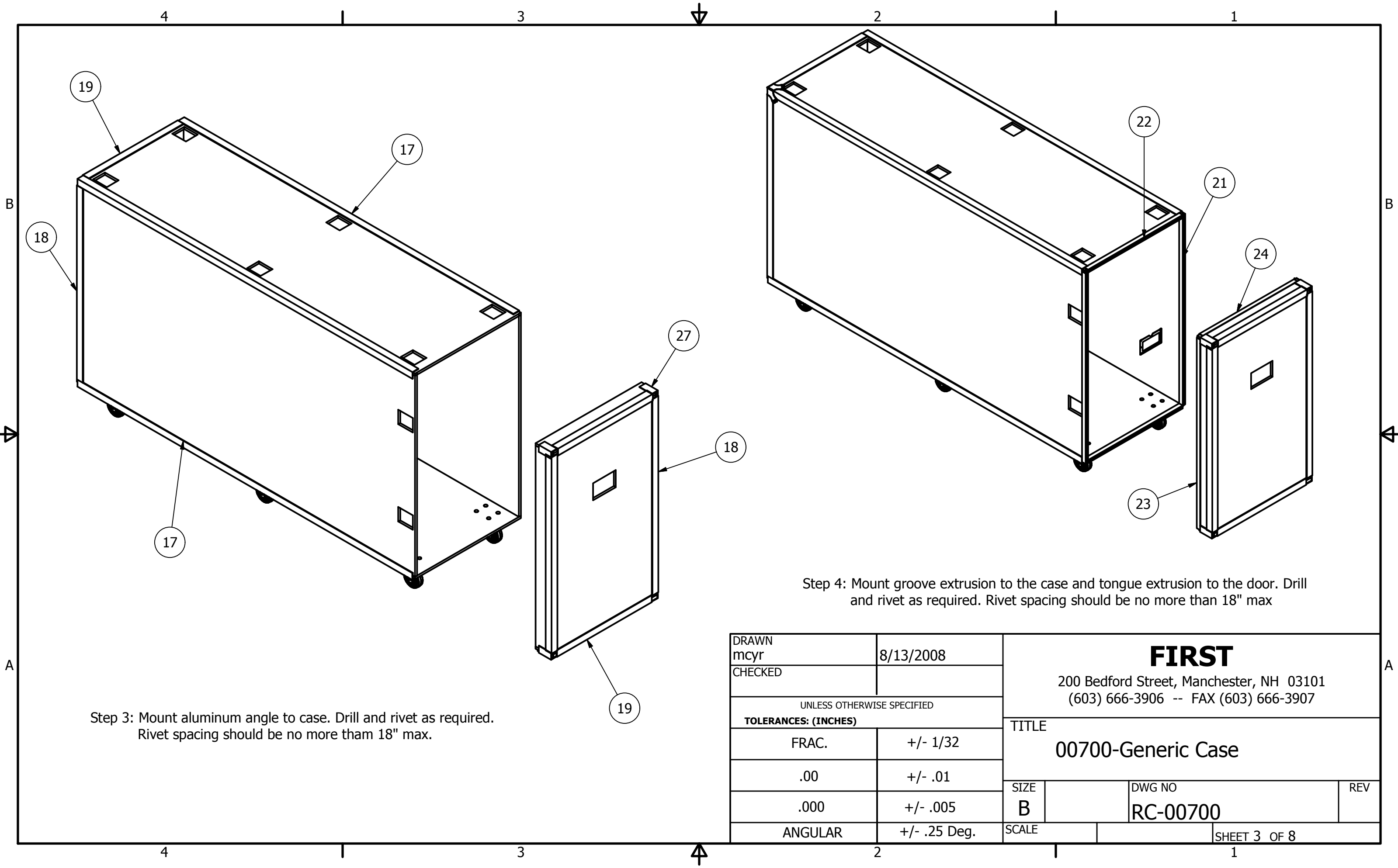
DRAWN mcyr	8/13/2008	FIRST 200 Bedford Street, Manchester, NH 03101 (603) 666-3906 -- FAX (603) 666-3907	
CHECKED			
UNLESS OTHERWISE SPECIFIED		TITLE 00700-Generic Case	
TOLERANCES: (INCHES)			
FRAC.	+/- 1/32		
.00	+/- .01	SIZE	DWG NO
.000	+/- .005	B	RC-00700
ANGULAR	+/- .25 Deg.	SCALE	SHEET 1 OF 8



Step 1: Mount casters using specified hardware.

Step 2: Glue and staple plywood together as required to create case & door.

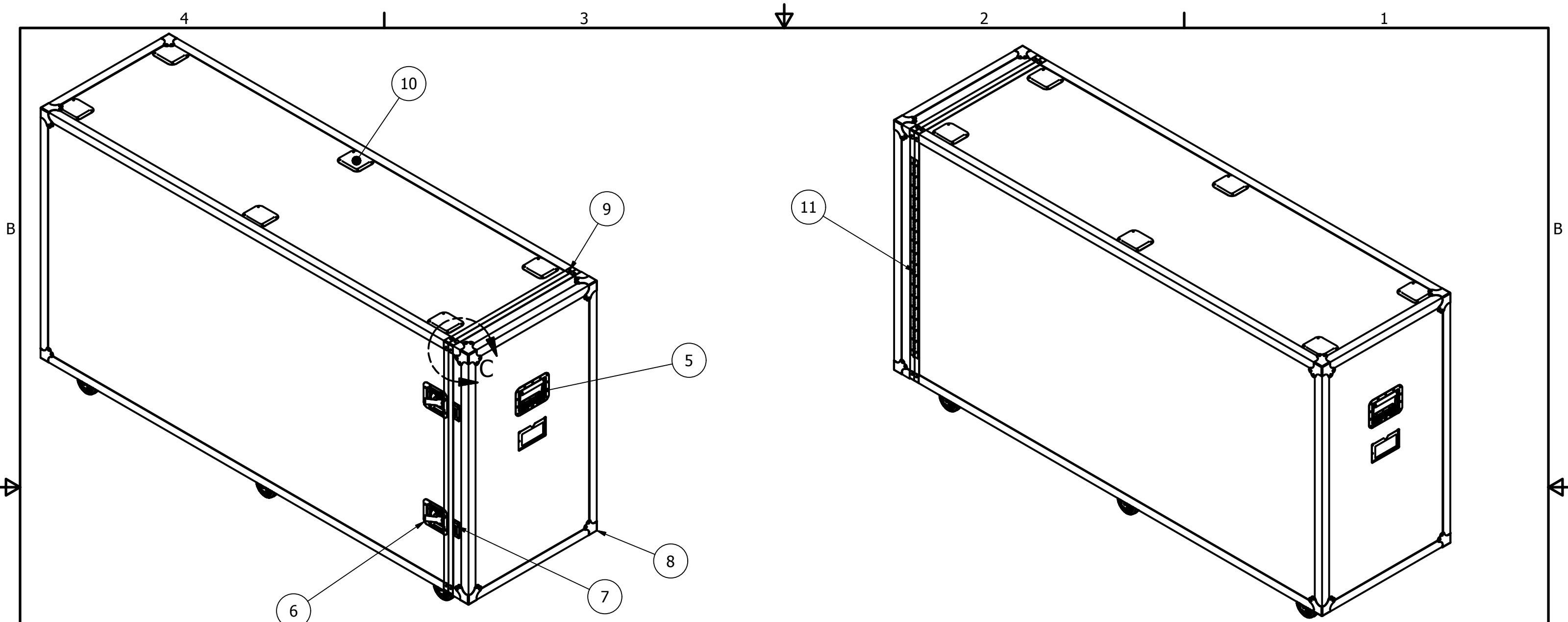
DRAWN mcyr	8/13/2008	FIRST 200 Bedford Street, Manchester, NH 03101 (603) 666-3906 -- FAX (603) 666-3907		
CHECKED				
UNLESS OTHERWISE SPECIFIED		TITLE 00700-Generic Case		
TOLERANCES: (INCHES)				
FRAC.	+/- 1/32	SIZE	DWG NO	REV
.00	+/- .01	B	RC-00700	
.000	+/- .005	SCALE	SHEET 2 OF 8	
ANGULAR	+/- .25 Deg.			



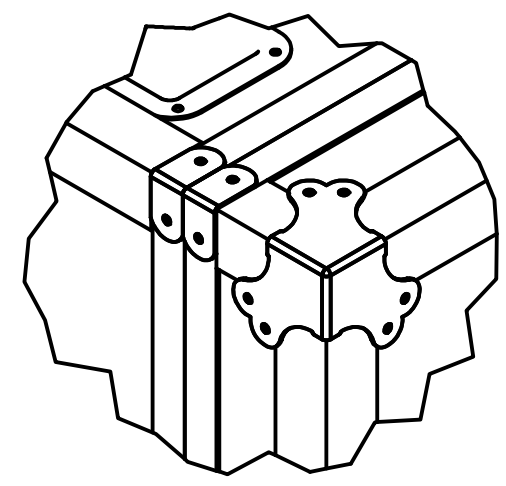
Step 3: Mount aluminum angle to case. Drill and rivet as required. Rivet spacing should be no more than 18" max.

Step 4: Mount groove extrusion to the case and tongue extrusion to the door. Drill and rivet as required. Rivet spacing should be no more than 18" max

DRAWN mcyr	8/13/2008	FIRST 200 Bedford Street, Manchester, NH 03101 (603) 666-3906 -- FAX (603) 666-3907		
CHECKED				
UNLESS OTHERWISE SPECIFIED		TITLE 00700-Generic Case		
TOLERANCES: (INCHES)				
FRAC.	+/- 1/32	SIZE	DWG NO	REV
.00	+/- .01	B	RC-00700	
.000	+/- .005	SCALE		
ANGULAR	+/- .25 Deg.	SHEET 3 OF 8		



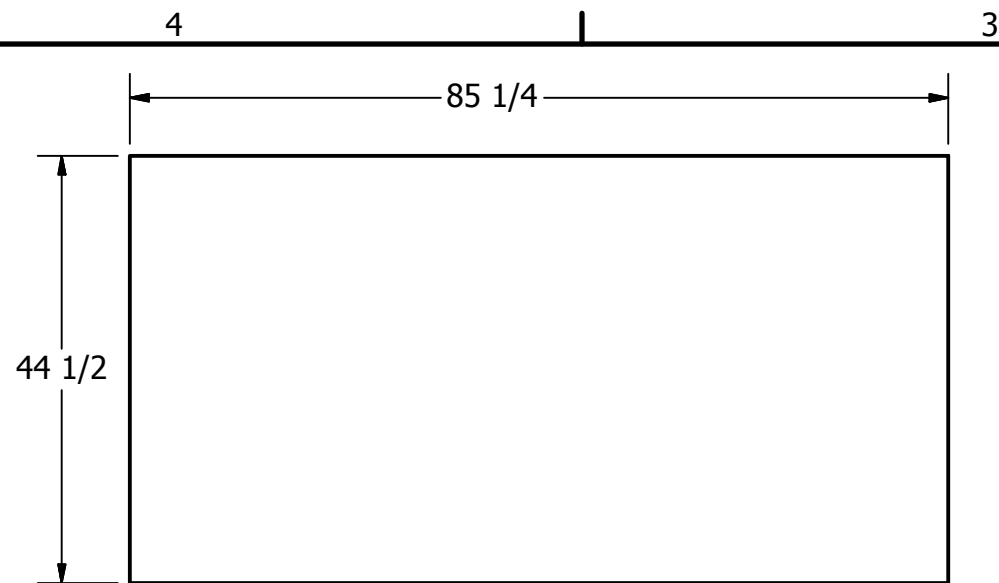
Step 5: Mount hardware using rivets.



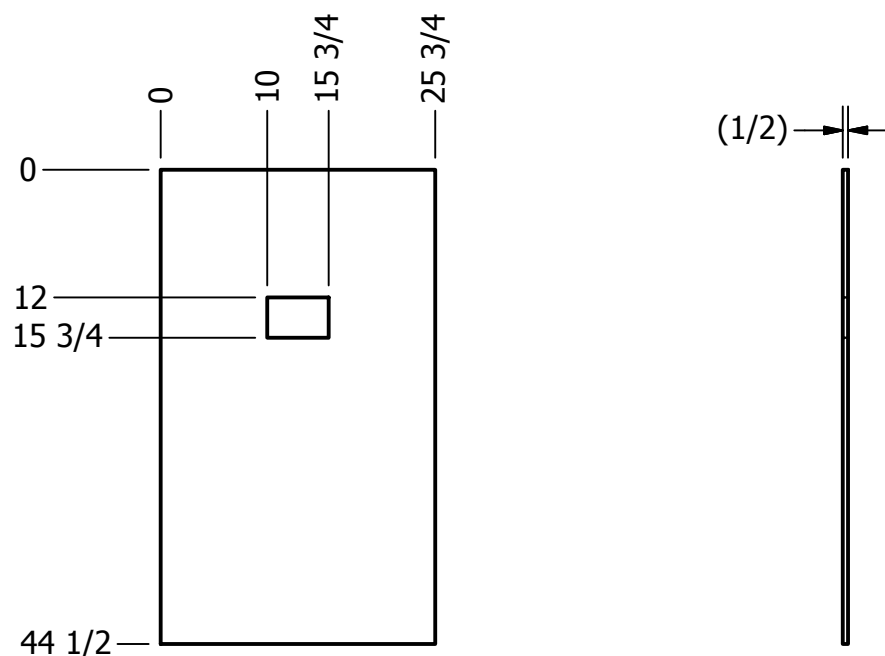
DETAIL C
SCALE 1/4

Step 5: Mount hinge centered top to bottom on back of the case and door using rivets.

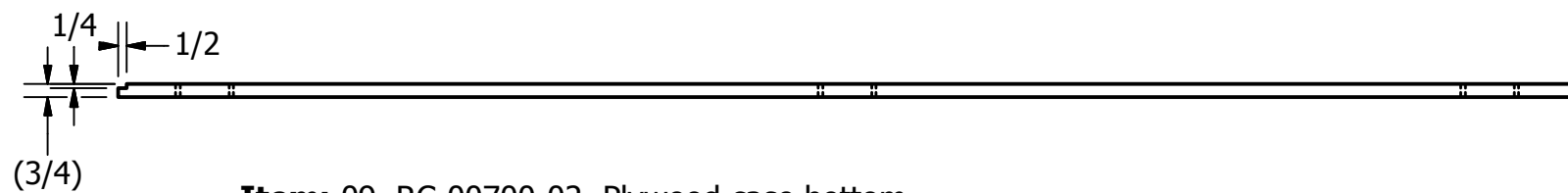
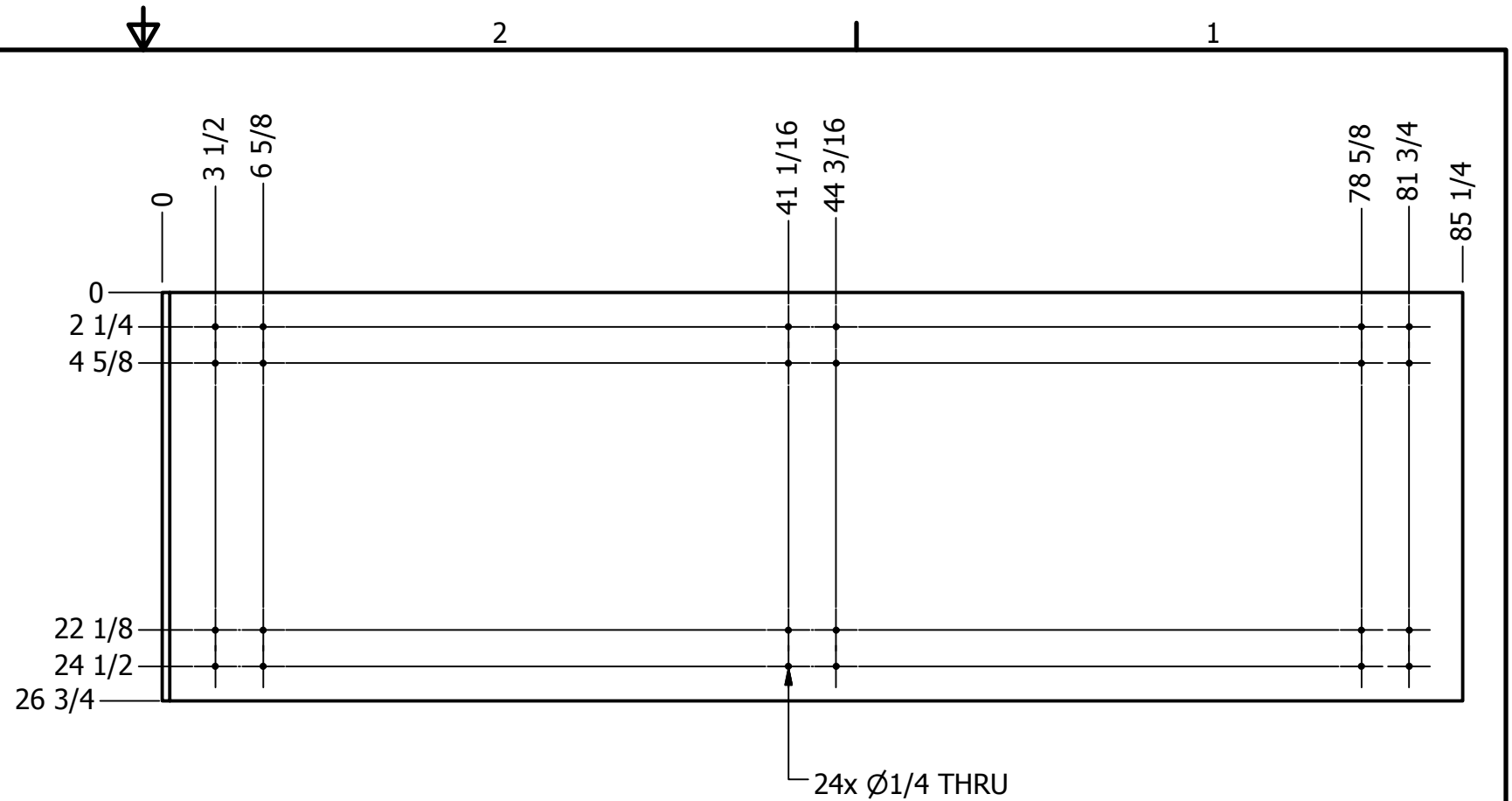
DRAWN mcyr	8/13/2008	FIRST 200 Bedford Street, Manchester, NH 03101 (603) 666-3906 -- FAX (603) 666-3907		
CHECKED				
UNLESS OTHERWISE SPECIFIED		TITLE 00700-Generic Case		
TOLERANCES: (INCHES)				
FRAC.	+/- 1/32	SIZE	DWG NO	REV
.00	+/- .01	B	RC-00700	
.000	+/- .005	SCALE	SHEET 4 OF 8	
ANGULAR	+/- .25 Deg.			



Item: 08, RC-00700-01, Plywood case back
Resource: 2
Scale: 1/20

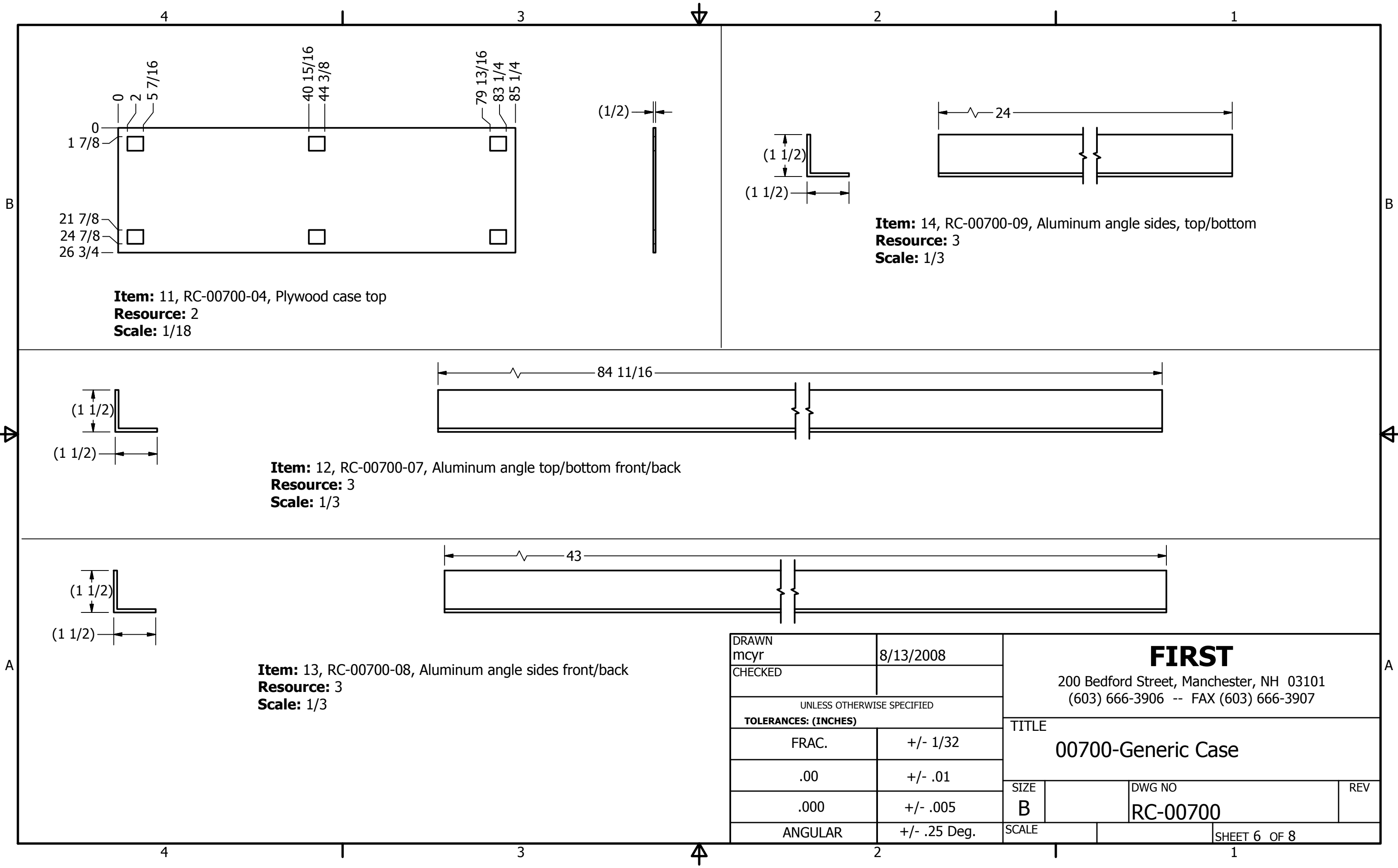


Item: 10, RC-00700-03, Plywood case side
Resource: 2
Scale: 1/18

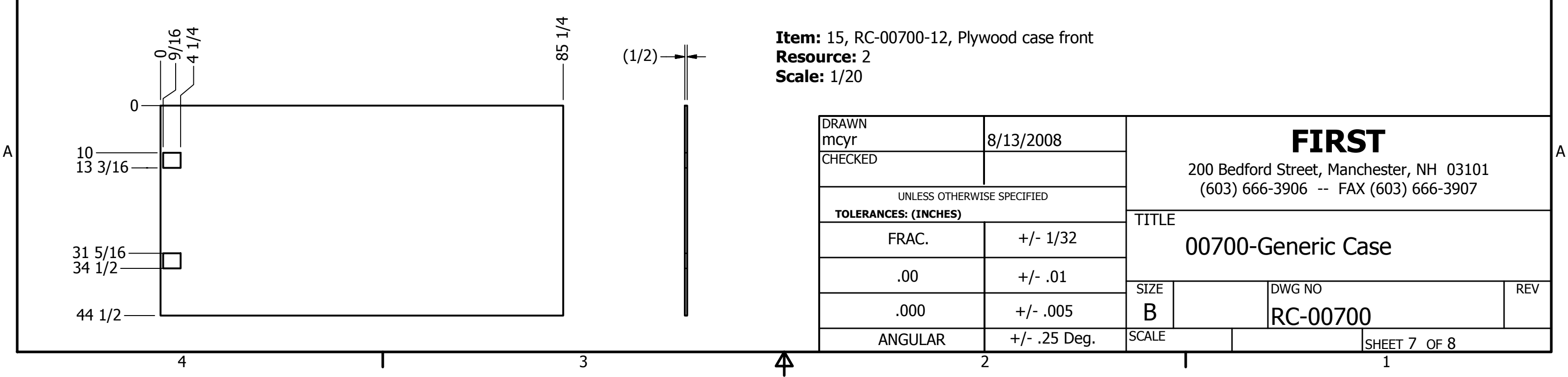
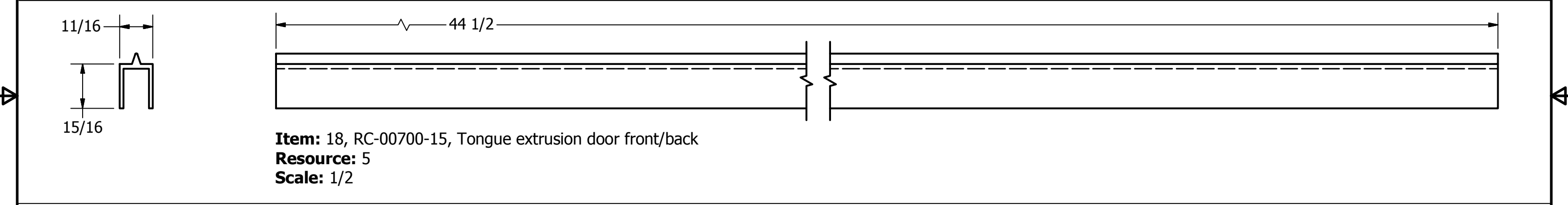
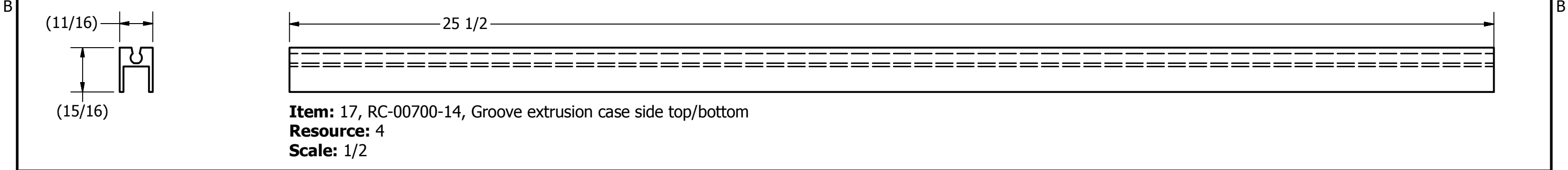
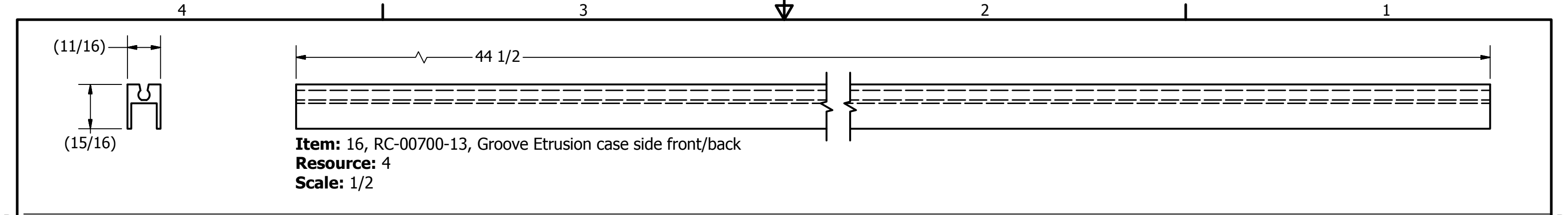


Item: 09, RC-00700-02, Plywood case bottom
Resource: 1
Scale: 1/11

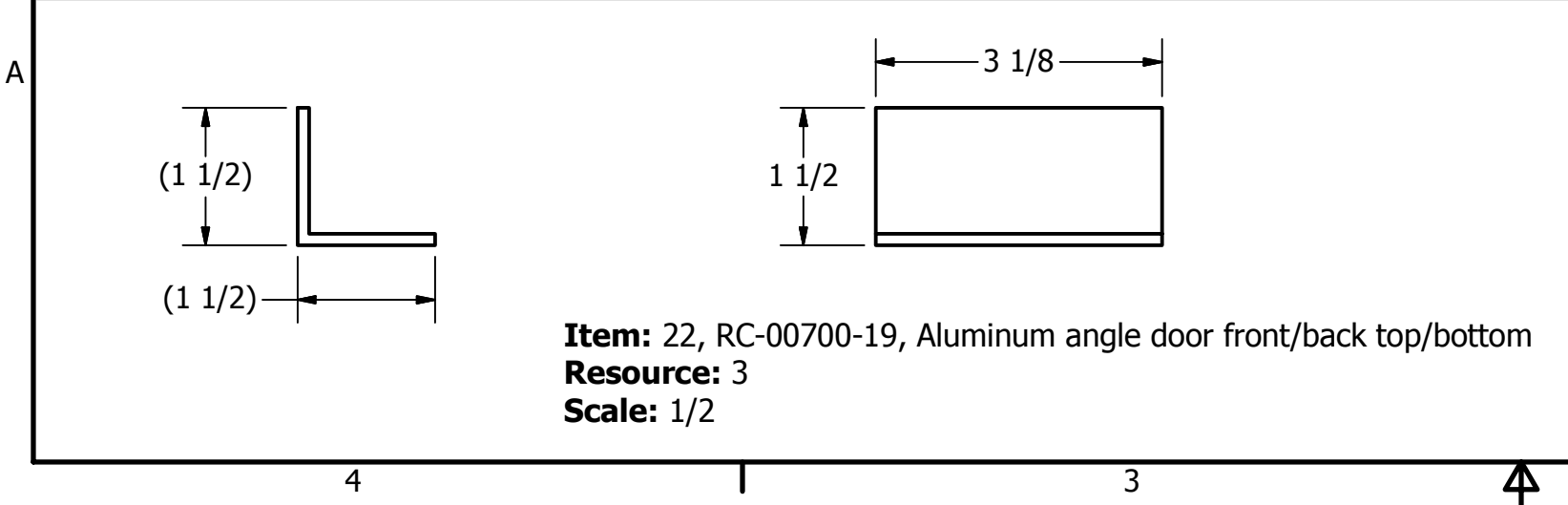
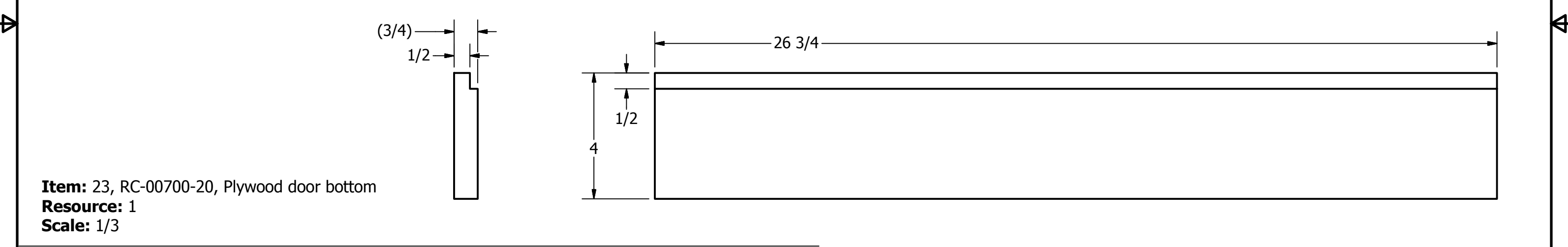
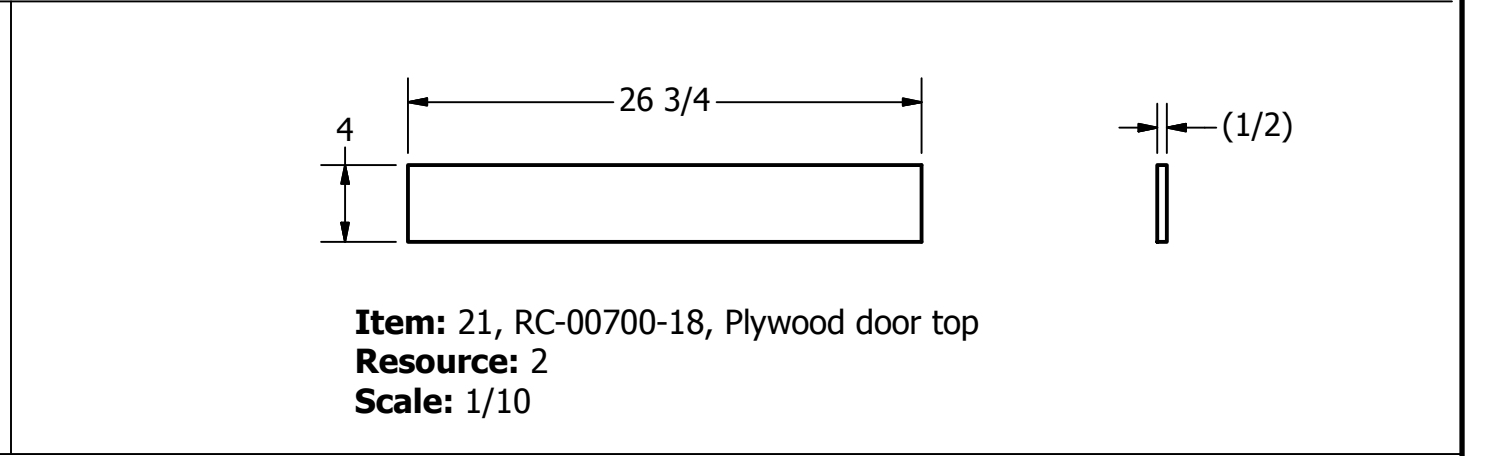
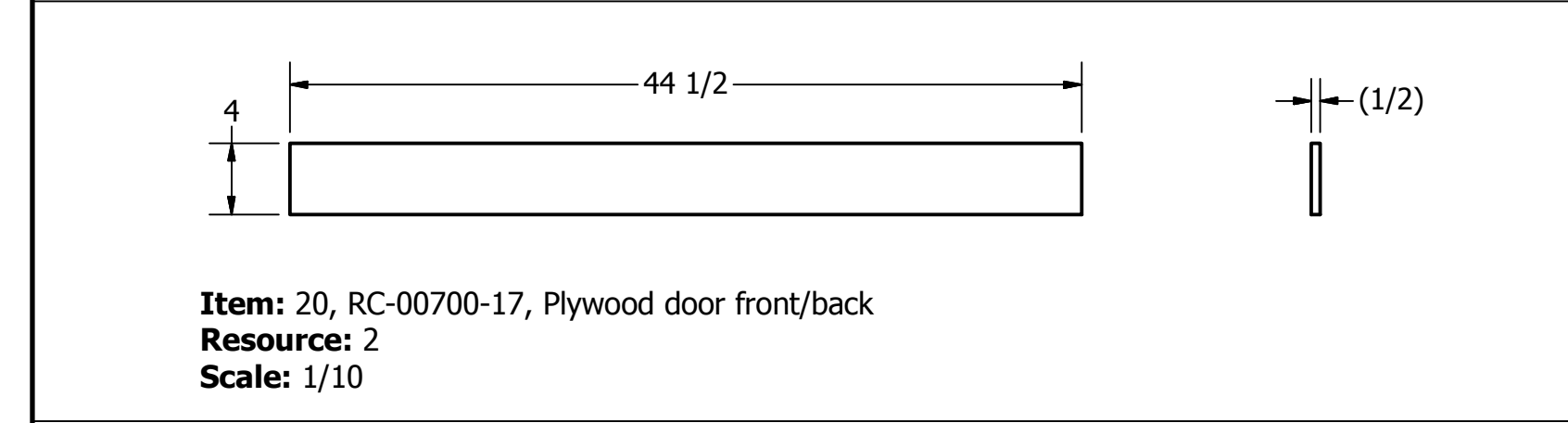
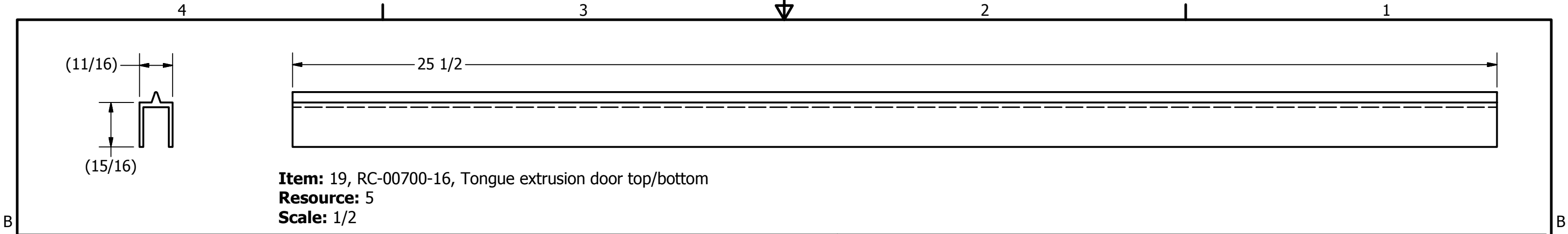
DRAWN mcyr	8/13/2008	FIRST 200 Bedford Street, Manchester, NH 03101 (603) 666-3906 -- FAX (603) 666-3907		
CHECKED				
UNLESS OTHERWISE SPECIFIED		TITLE 00700-Generic Case		
TOLERANCES: (INCHES)				
FRAC.	+/- 1/32	SIZE	DWG NO	REV
.00	+/- .01	B	RC-00700	
.000	+/- .005	SCALE		
ANGULAR	+/- .25 Deg.	SHEET 5 OF 8		



DRAWN mcyr	8/13/2008	FIRST 200 Bedford Street, Manchester, NH 03101 (603) 666-3906 -- FAX (603) 666-3907		
CHECKED				
UNLESS OTHERWISE SPECIFIED		TITLE 00700-Generic Case		
TOLERANCES: (INCHES)				
FRAC.	+/- 1/32			
.00	+/- .01			
.000	+/- .005	SIZE B	DWG NO RC-00700	REV
ANGULAR	+/- .25 Deg.	SCALE	SHEET 6 OF 8	



DRAWN mcyr	8/13/2008	FIRST 200 Bedford Street, Manchester, NH 03101 (603) 666-3906 -- FAX (603) 666-3907		
CHECKED				
UNLESS OTHERWISE SPECIFIED		TITLE 00700-Generic Case		
TOLERANCES: (INCHES)				
FRAC.	+/- 1/32	SIZE	DWG NO	REV
.00	+/- .01	B	RC-00700	
.000	+/- .005	SCALE	SHEET 7 OF 8	
ANGULAR	+/- .25 Deg.			



DRAWN	mcyr	8/13/2008
CHECKED		
UNLESS OTHERWISE SPECIFIED		
TOLERANCES: (INCHES)		
FRAC.		+/- 1/32
	.00	+/- .01
	.000	+/- .005
ANGULAR		+/- .25 Deg.

FIRST
 200 Bedford Street, Manchester, NH 03101
 (603) 666-3906 -- FAX (603) 666-3907

TITLE
00700-Generic Case

SIZE		DWG NO		REV	
B		RC-00700			
SCALE		SHEET 8 OF 8			