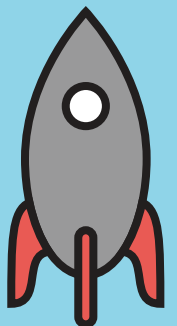
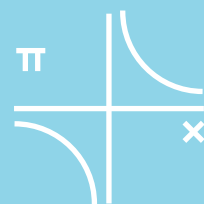
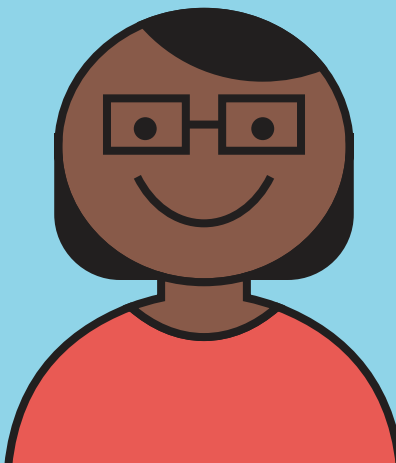
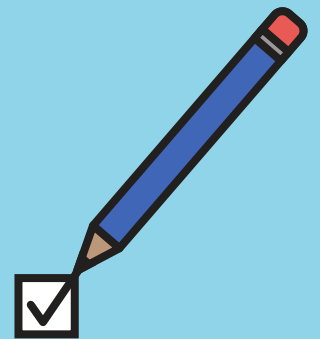
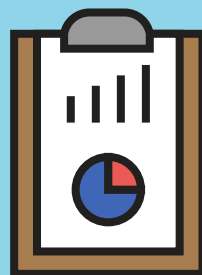
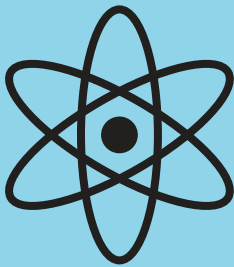
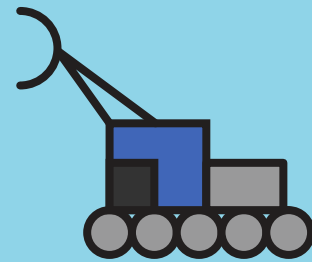
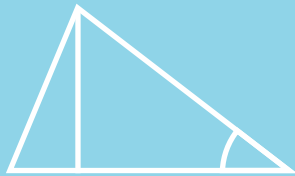
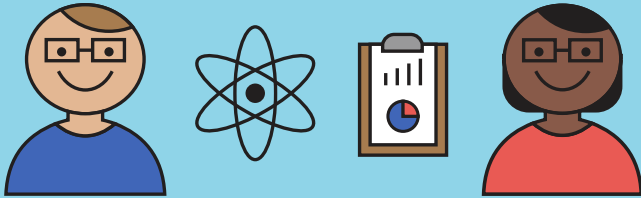


# FIRST<sup>®</sup>

## THE IMPACT



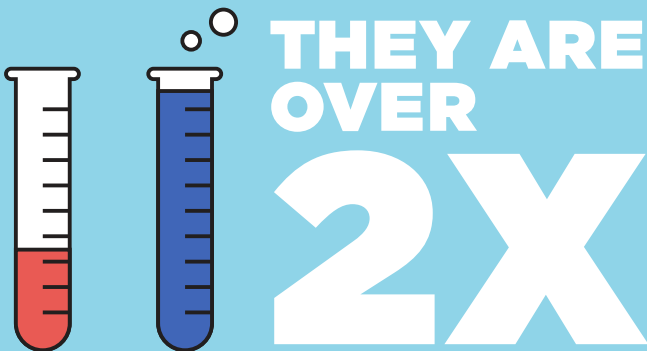
# SUBSTANTIAL INCREASE IN STEM INTEREST.



**FIRST<sup>®</sup>** participants are **SIGNIFICANTLY MORE LIKELY** to show gains in interest in:

- STEM
- STEM CAREERS
- UNDERSTANDING OF STEM

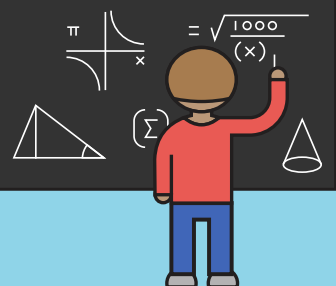
(than a matched comparison group of students)



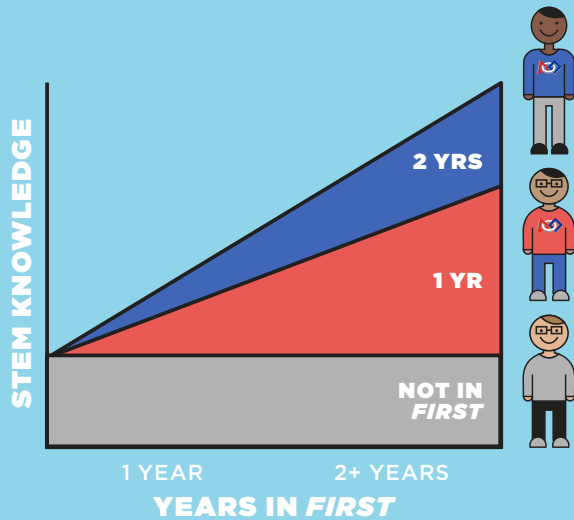
as likely to show gains in their interest of **STEM**

(than a matched comparison group of students)

**87%** OF PARTICIPANTS PLAN TO TAKE A **MORE CHALLENGING** MATH OR SCIENCE COURSE

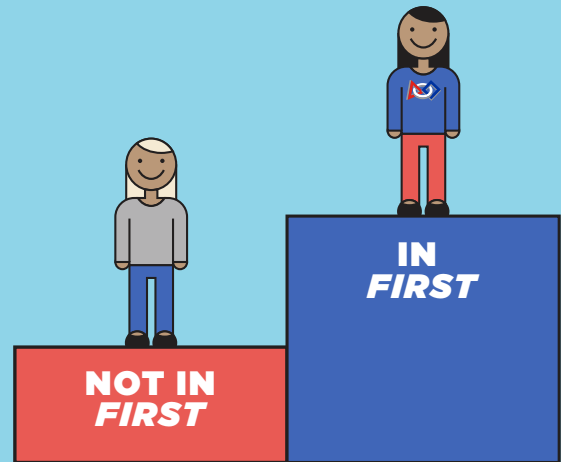


# SUBSTANTIAL INCREASE IN STEM UNDERSTANDING.



## STEM INTEREST CONTINUES TO GROW THE LONGER YOU STAY

Students who persist in *FIRST* for more than one year show significantly greater gains than those who left after a single year.



## THE IMPACT ON GIRLS IS SIGNIFICANT

Females in *FIRST* have a dramatically increased understanding of STEM compared to females in the comparison group.

**“Through *FIRST*, I was able to discover my passion for robotics and gain some amazing life opportunities that have led me to the path that I am on now.”**

**- Jordan Burkland, *FIRST* Alumnus**

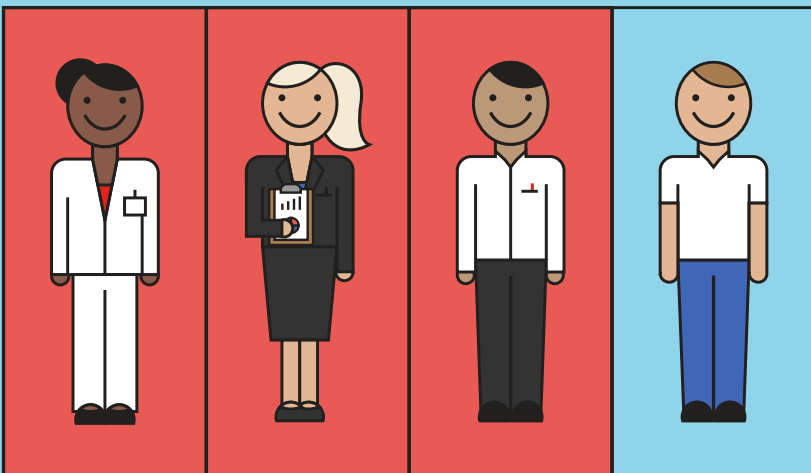
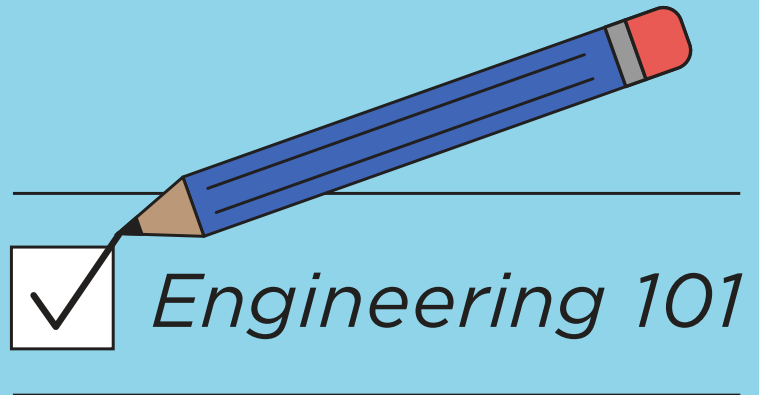
READY FOR A CAREER IN STEM.

FIRST ALUMNI ARE

**2.6x**

more likely to enroll in an  
**ENGINEERING**  
course their freshman year

(than a matched comparison group of students)



OVER  
**75%**

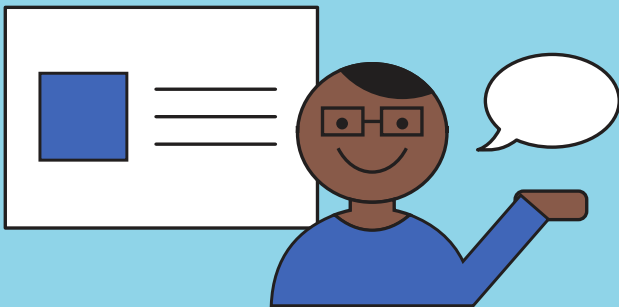
of *FIRST* Alumni are in a  
**STEM FIELD AS  
A STUDENT OR  
PROFESSIONAL**

# GAINS IN WORKFORCE SKILLS.



## COMMUNICATION

76% of students reported gains



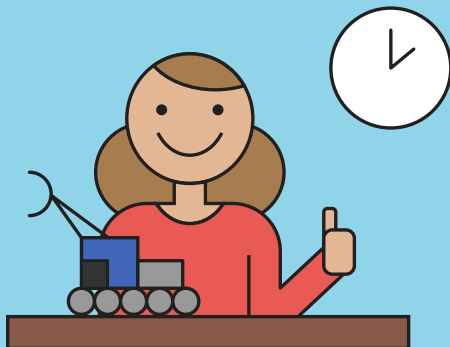
## CONFLICT RESOLUTION

93% of students reported gains



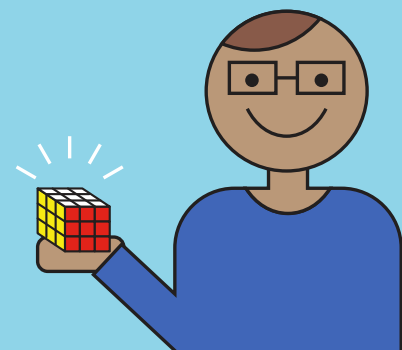
## TIME MANAGEMENT

95% of students reported gains



## PROBLEM-SOLVING

98% of students reported gains





**LEARN MORE AT**  
**[firstinspires.org/impact](http://firstinspires.org/impact)**

---

Based on decades of findings from external evaluations, external studies as well as internal surveys. Comparison claims based on data from *FIRST*® Longitudinal Study comparing average gains for *FIRST* participants vs. comparison students taking into account differences between the groups at baseline.

**SOURCES:**

Brandeis University (2016). *FIRST*® Longitudinal Study: Finding at Follow-Up. Waltham, MA.

*FIRST*®, 2015 *FIRST* Alumni Survey.

Brandeis University, 2011 *FIRST*® Tech Challenge – *FIRST*® Robotics Competition Evaluation & 2013 *FIRST*® LEGO® League Evaluation.