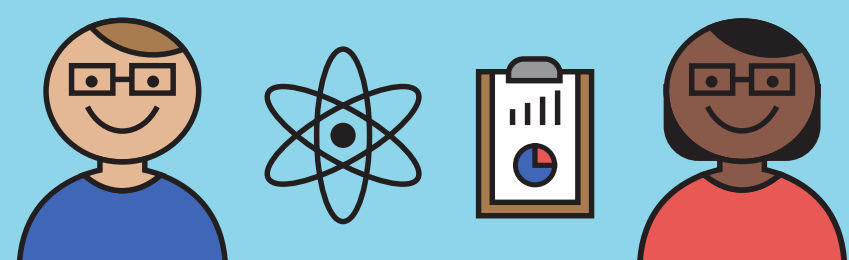




## THE IMPACT

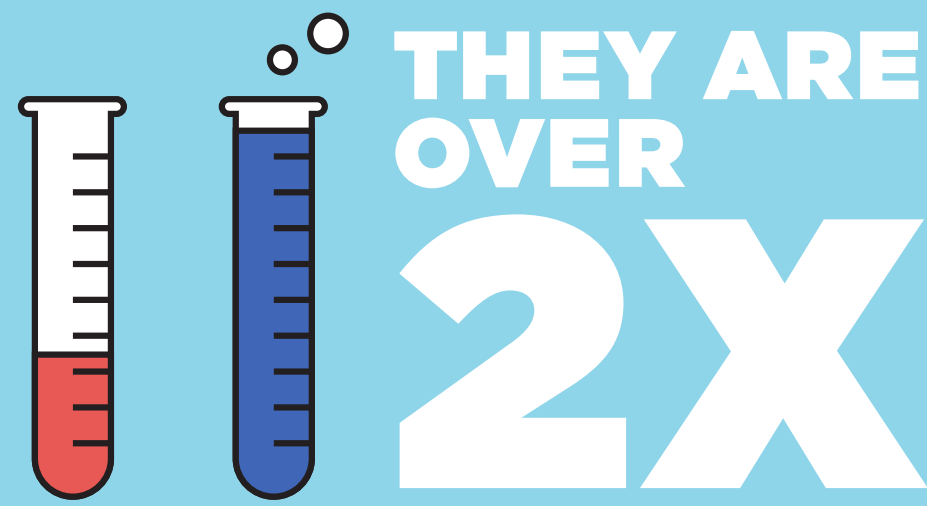
### SUBSTANTIAL INCREASE IN STEM INTEREST.



**FIRST**® participants are **SIGNIFICANTLY MORE LIKELY** to show gains in interest in:

- ☑ STEM
- ☑ STEM CAREERS
- ☑ UNDERSTANDING OF STEM

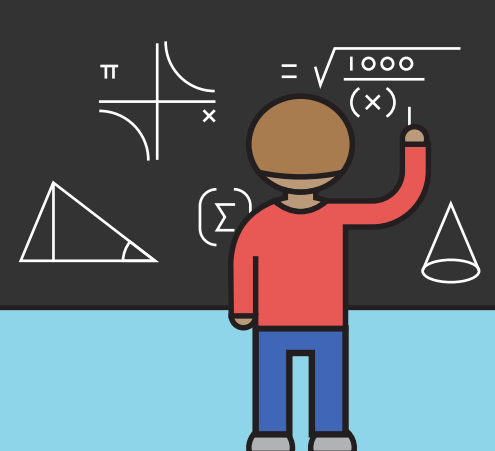
(than a matched comparison group of students)



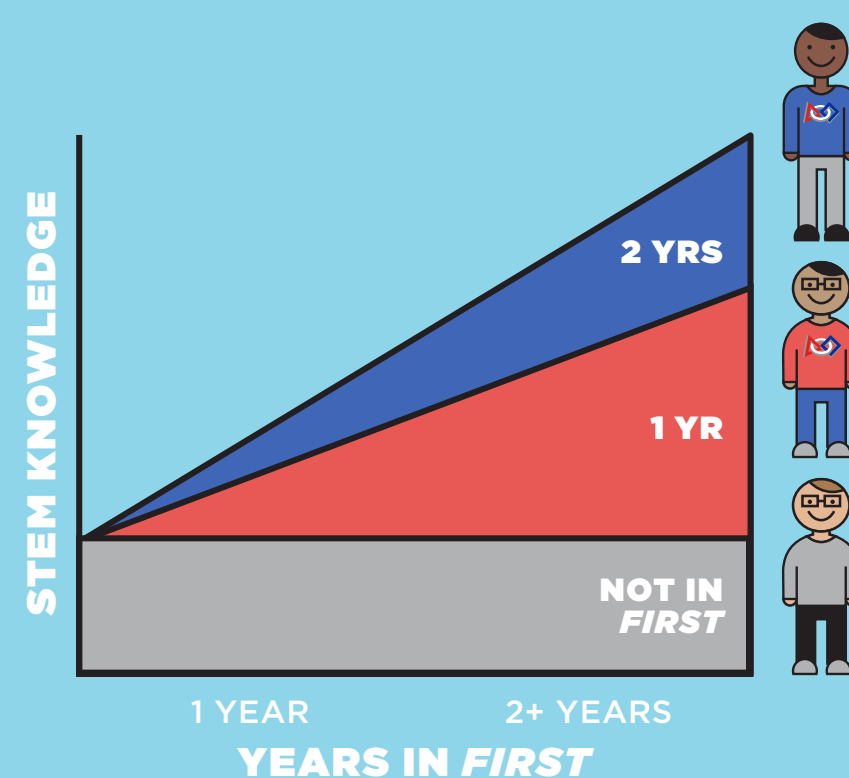
as likely to show gains in their interest of STEM

(than a matched comparison group of students)

**87%** OF PARTICIPANTS PLAN TO TAKE A **MORE CHALLENGING** MATH OR SCIENCE COURSE

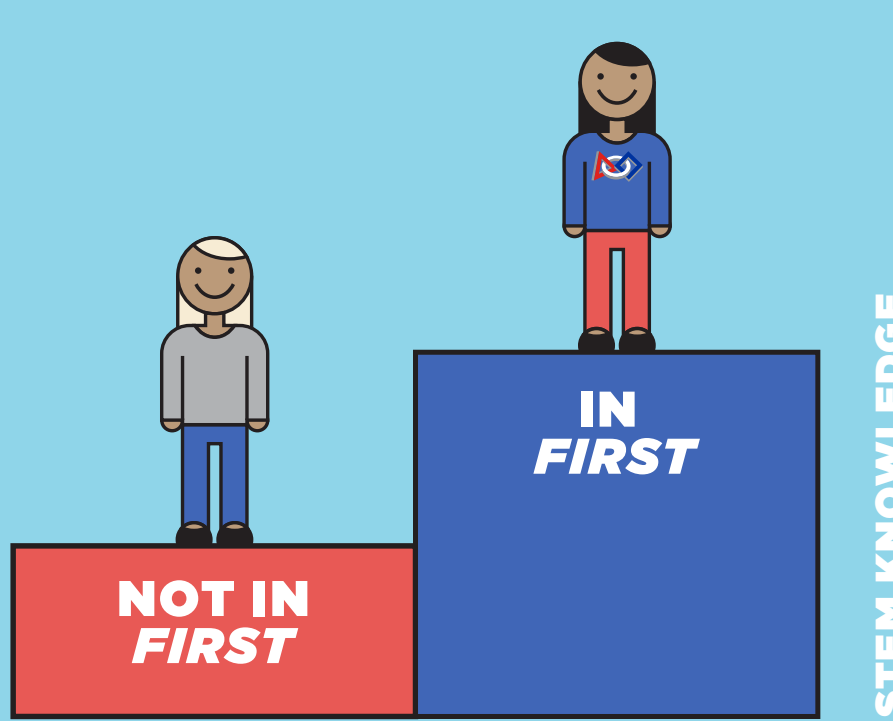


### SUBSTANTIAL INCREASE IN STEM UNDERSTANDING.



**STEM KNOWLEDGE CONTINUES TO GROW THE LONGER YOU STAY**

Students who persist in *FIRST* for more than one year show significantly greater gains than those who left after a single year.



**THE IMPACT ON GIRLS IS SIGNIFICANT**

Females in *FIRST* have a dramatically increased understanding of STEM compared to females in the comparison group.

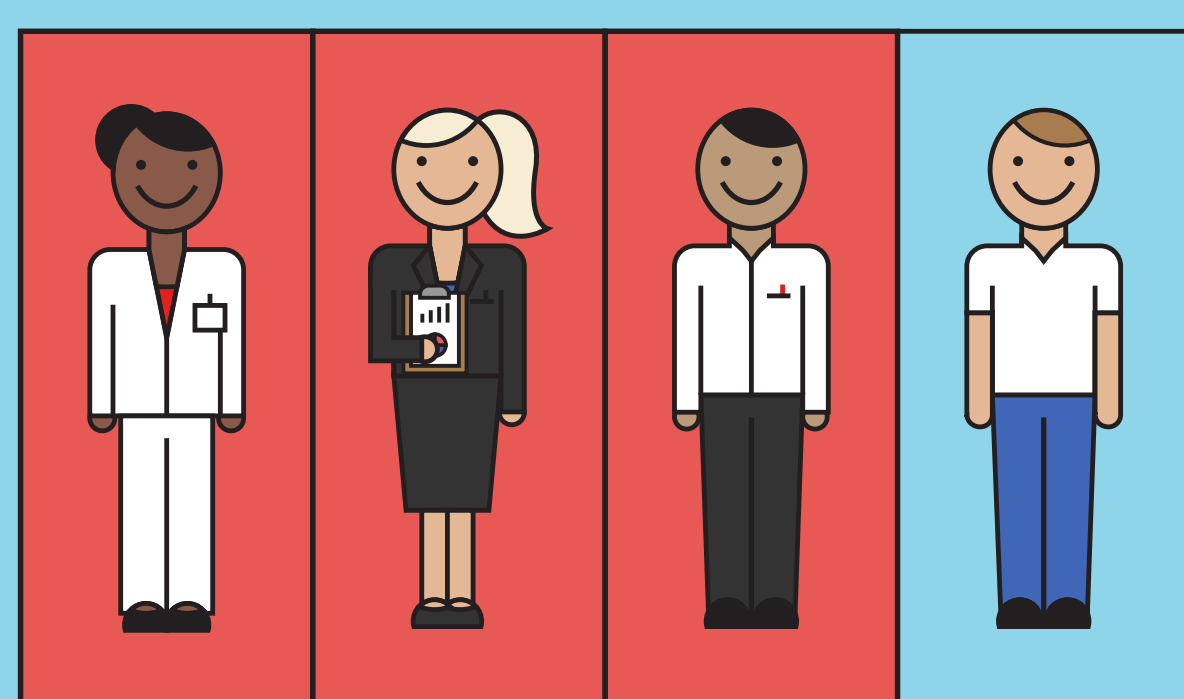
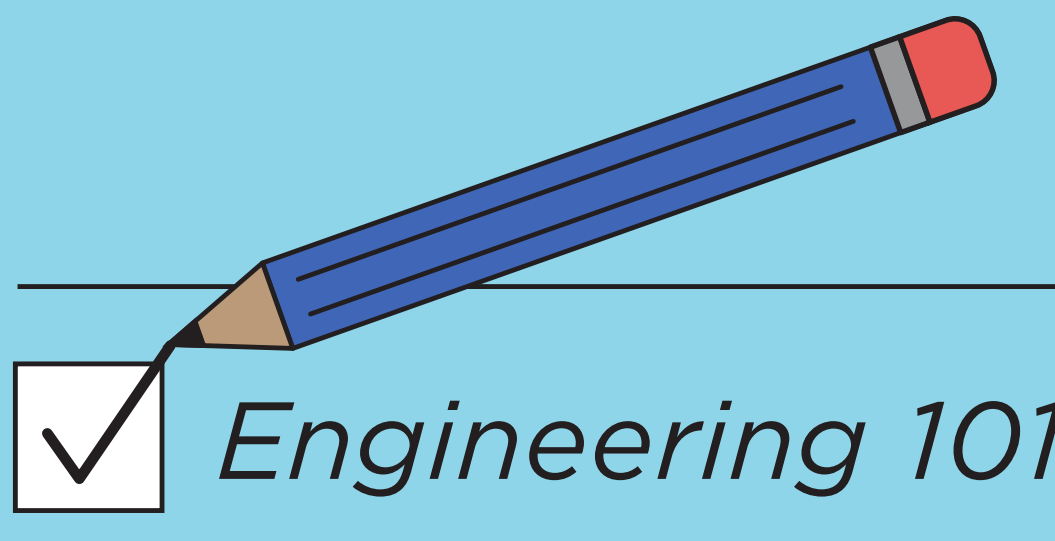
**“Through *FIRST*, I was able to discover my passion for robotics and gain some amazing life opportunities that have led me to the path that I am on now.”**

- Jordan Burkland, *FIRST* Alumnus

### READY FOR A CAREER IN STEM.

**FIRST ALUMNI ARE 2.6x** more likely to enroll in an **ENGINEERING** course their freshman year

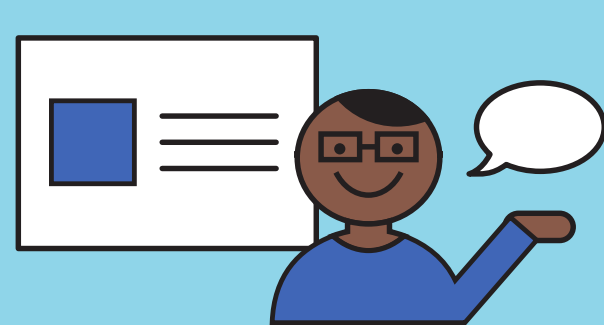
(than a matched comparison group of students)



**OVER 75%** of *FIRST* Alumni are in a **STEM FIELD AS A STUDENT OR PROFESSIONAL**

### GAINS IN WORKFORCE SKILLS.

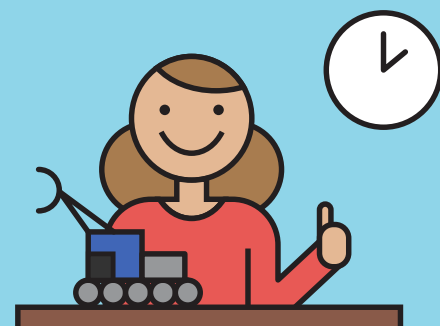
**COMMUNICATION**  
76% of students reported gains



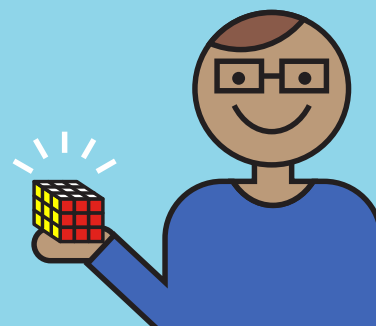
**CONFLICT RESOLUTION**  
93% of students reported gains



**TIME MANAGEMENT**  
95% of students reported gains



**PROBLEM-SOLVING**  
98% of students reported gains



LEARN MORE AT [firstinspires.org/impact](http://firstinspires.org/impact)

Based on decades of findings from external evaluations, external studies as well as internal surveys. Comparison claims based on data from *FIRST*® Longitudinal Study comparing average gains for *FIRST* participants vs. comparison students taking into account differences between the groups at baseline.

#### SOURCES:

Brandeis University (2016). *FIRST*® Longitudinal Study: Finding at Follow-Up. Waltham, MA. *FIRST*®, 2015 *FIRST* Alumni Survey.  
Brandeis University, 2011 *FIRST*® Tech Challenge - *FIRST*® Robotics Competition Evaluation & 2013 *FIRST*® LEGO® League Evaluation.